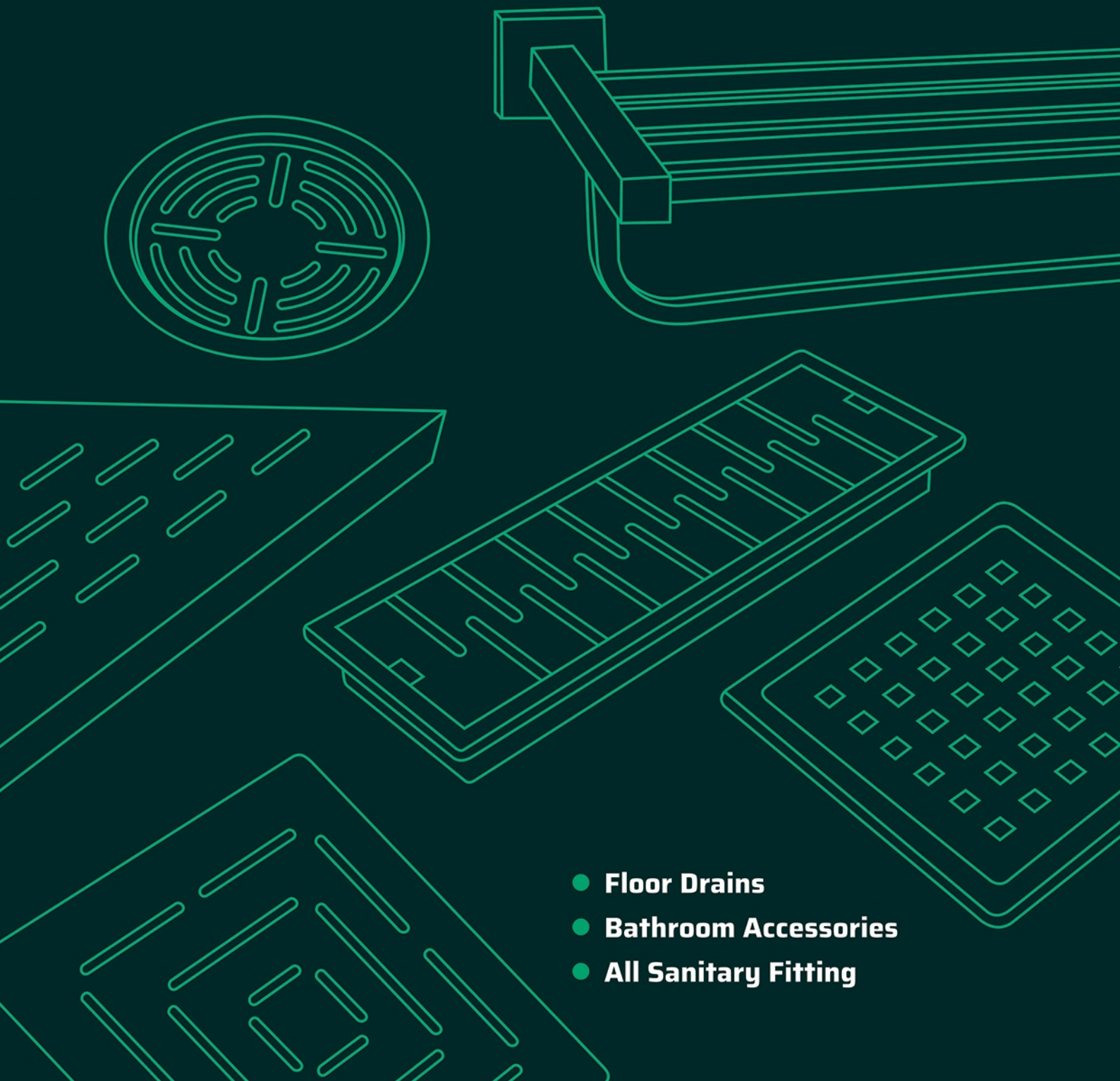




PRIDEL[®]

BATH ACCESSORIES



- **Floor Drains**
- **Bathroom Accessories**
- **All Sanitary Fitting**



About Us

“Pridel Industries” Ever since its existence in 2018 is all determined to deliver Quality Products and no Compromise is ever accepted in this philosophy. We have developed Stainless Steel FLOOR DRAINS Accessories. The Design, Material, Machining Process, Other process, Stage & Final Inspection, Packaging & Dispatch of the Material all done under Expert supervision of Our highly Qualified Team.

The uni Line Vision about Quality has made us to develop the infrastructure and atmosphere suitable for the same. The Surge for Quality has made us to put most advance Technology at work and the results is invertible. The superior Quality and the Cost effectiveness have made us prosper and spread across the nation. The Product is appreciated and paid us richer returns as well.

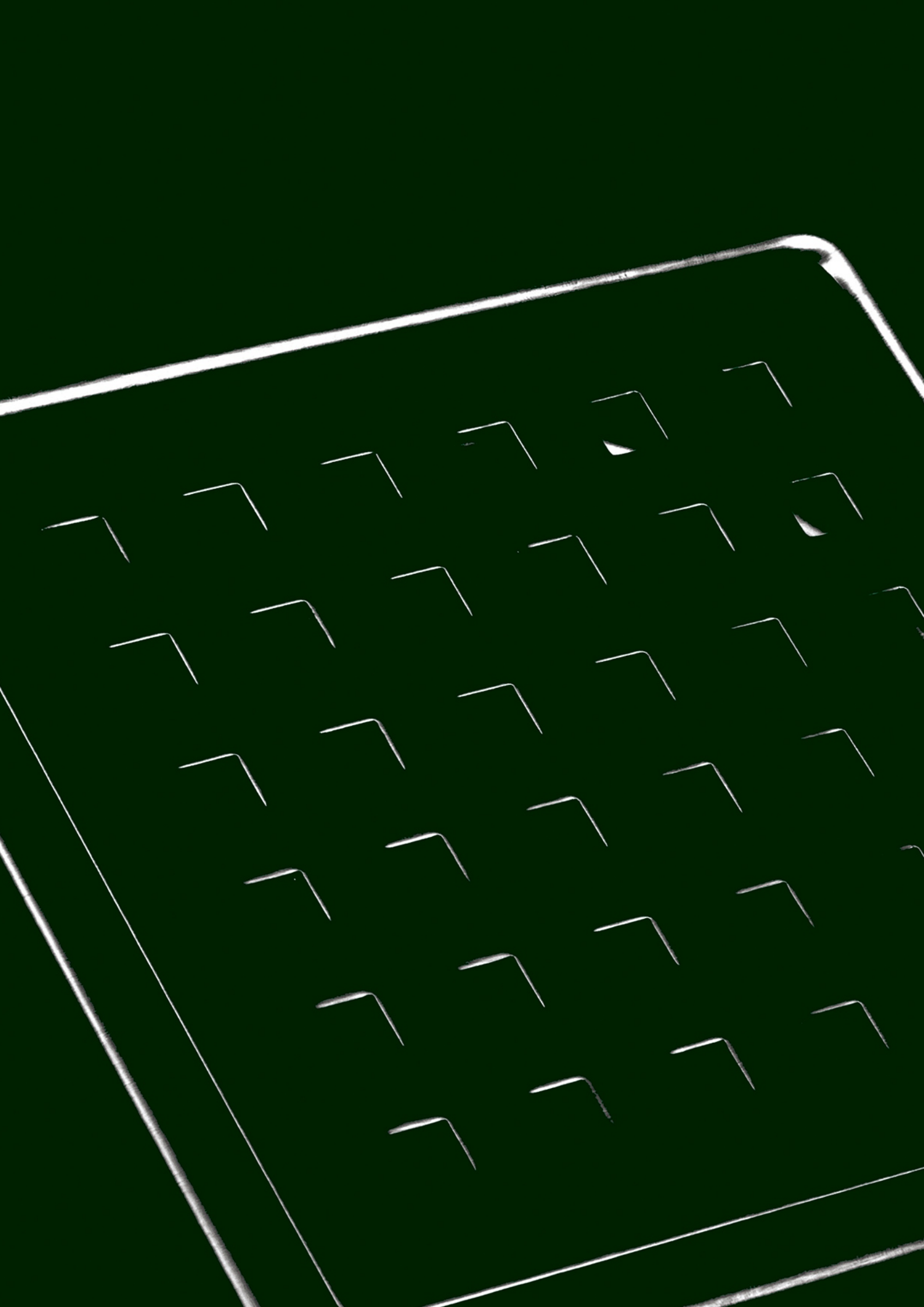
The USP of Our team is Experience know how about material, Proper Process, and everlasting hunger for Quality. Our team comprises of mixture of Yung and Experienced, Skilled and Qualified, Enthusiastic & determined personnel. This is the strength of any Organization. We are blessed with such a talented team because we nurtured them with continuous up gradation Technical support, Work friendly atmosphere, latest machines and proper guidelines to follow.

We believe in leading from the front and hence we are progressing towards developing World class products and keep on beating our own mile stones every time and let others to follow our footprints.....

Our Vision

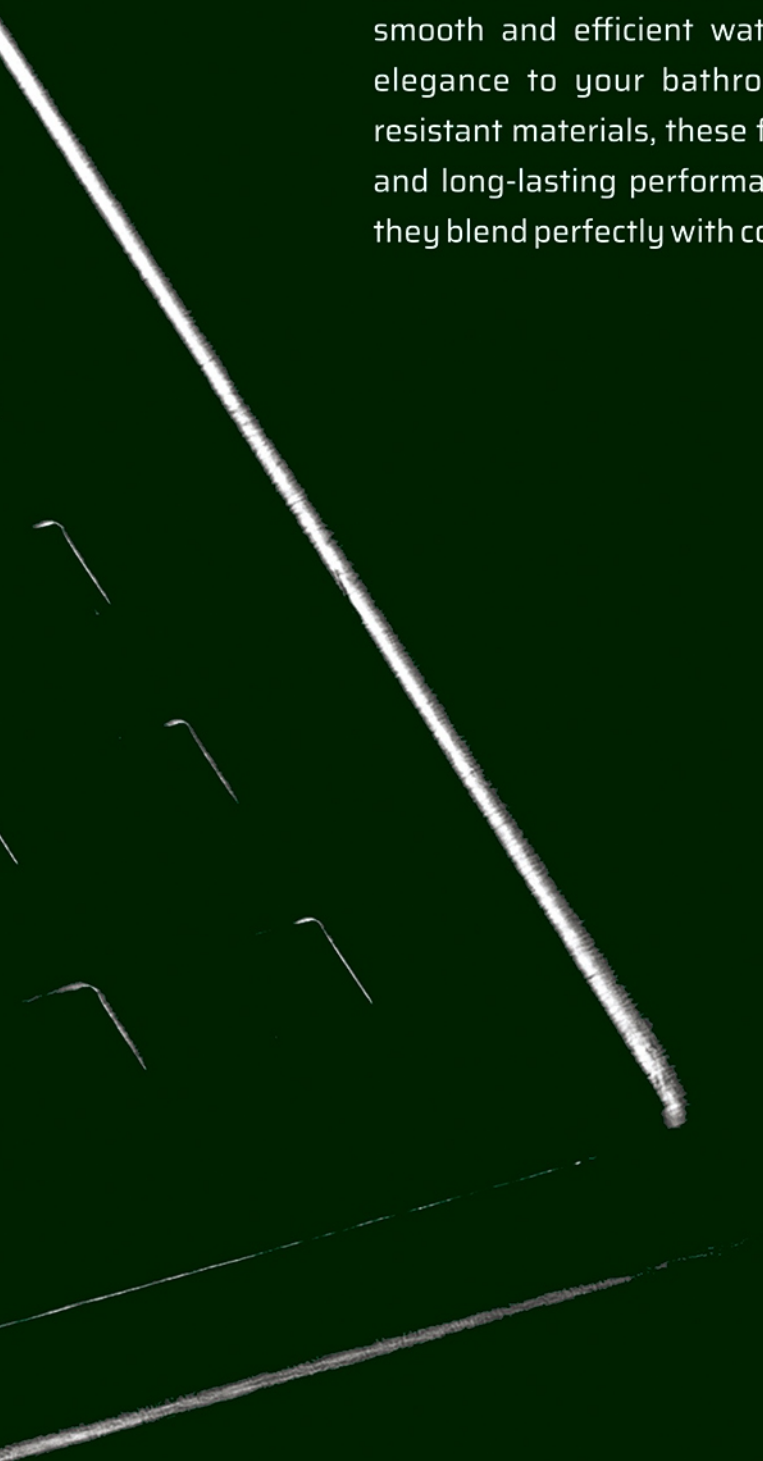
We aspire to be the industry leader in innovative, high-quality bathroom accessories and floor drains—where luxury meets affordability. With a commitment to elegance, functionality, and cutting-edge technology, we transform everyday spaces into sophisticated sanctuaries. Through exceptional craftsmanship, customer-centric excellence, and continuous innovation, we redefine comfort and style, making elevated living accessible to all.



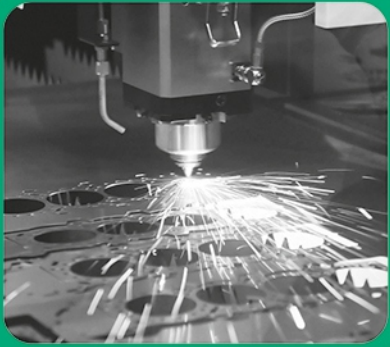


Floor Drain

Our premium Floor Drain bath accessories are designed to ensure smooth and efficient water drainage while adding a touch of elegance to your bathroom. Crafted from high-quality, rust-resistant materials, these floor drains provide durability, hygiene, and long-lasting performance. With a sleek and modern design, they blend perfectly with contemporary bathroom interiors.



Manufacturing Process



Laser Cutting



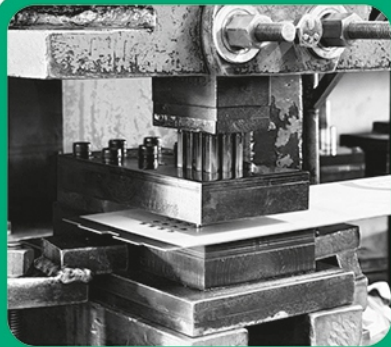
Processing



Bending



Argon Welding



Pressing



Buffing



Checking



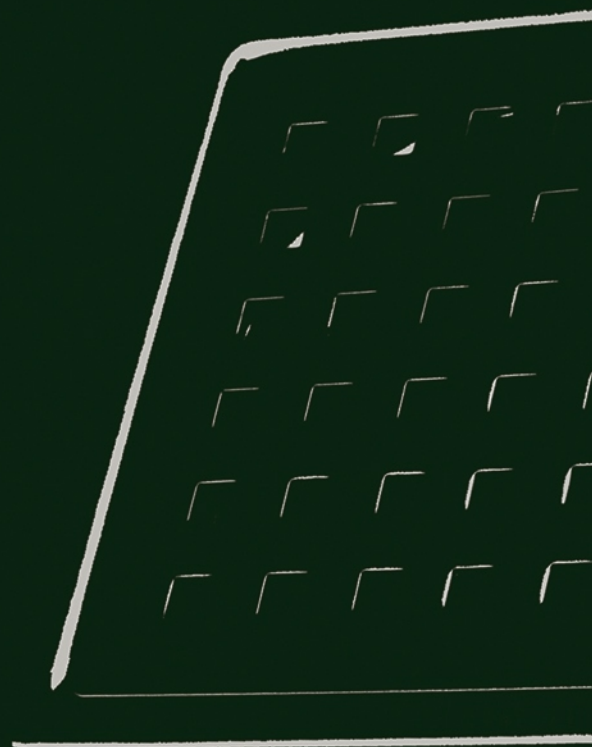
Packing



Shipping

DRAIN

Channel Drain	07
Channel Drain (W/O Kollar)	15
Tiles / Marble Channel Drain	23
Tiles / Marble Insert	25
Floor Drain (With Kollar)	27
Floor Drain (W/o Kollar)	29
Floor Drain	31
Flat Cut Floor Drain	35
Flapper Floor Drain	39
Square Locking Drain	41
Round Locking Drain	42
Thumb / Bricks / Clean Out	43
Fix Drain	44
Vertical Drain	45
Triangle Drain	46
Pop Up Drain	47
Cockroach Bowl	48
Manhole Cover	49
Rack Bolt / West Coupling	50
Shower	52
Shower Arm	55



BATH ACCESSORIES

OCEAN	58
ELISTA	59
ANGEL	60
CRYSTAL	61
RUBY	62
LIVA	63
SQUARE	64
ROYAL	65
STAR	66
MOON	67
AURA	68

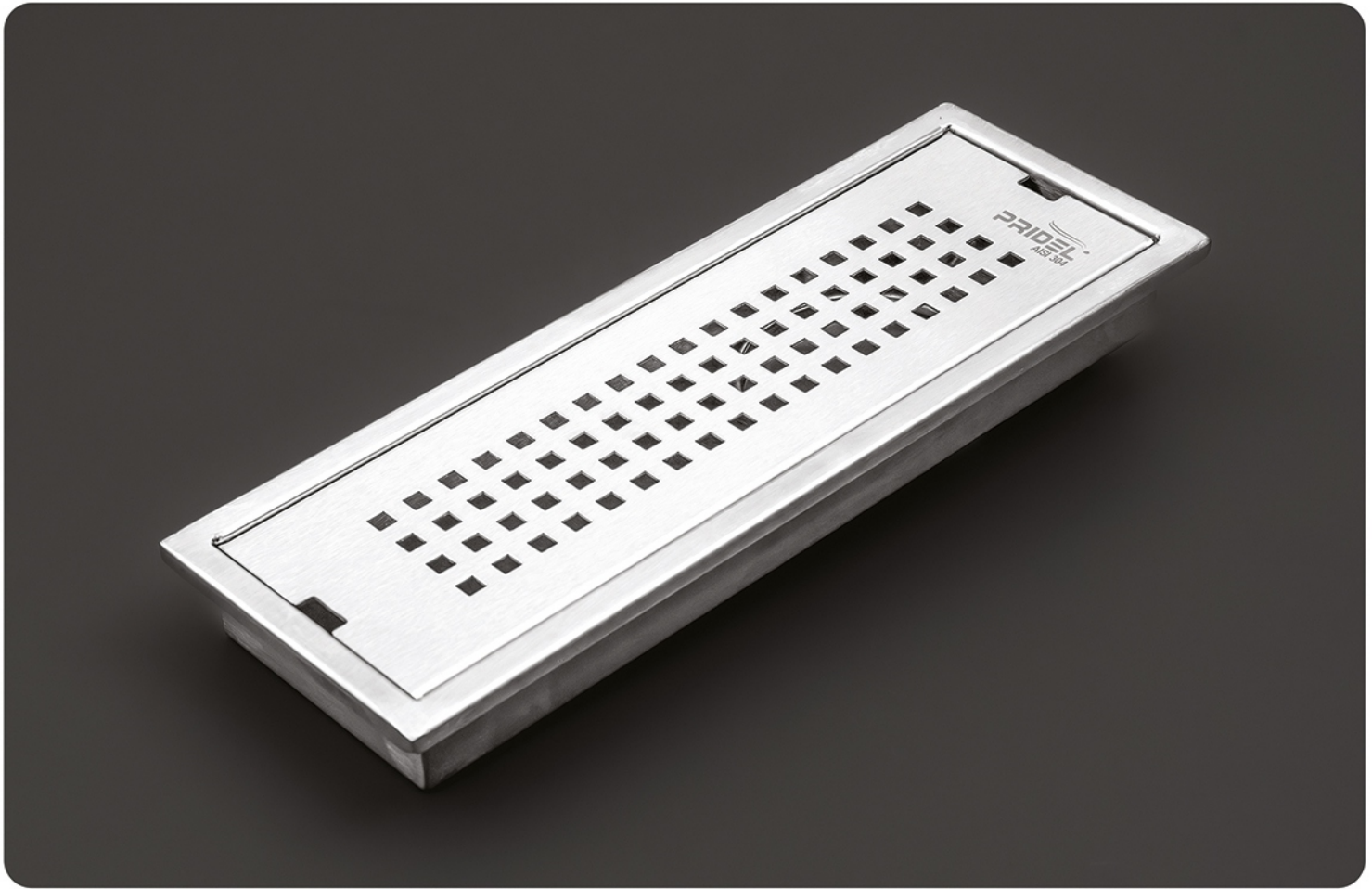




“A Line That
Disappears.”

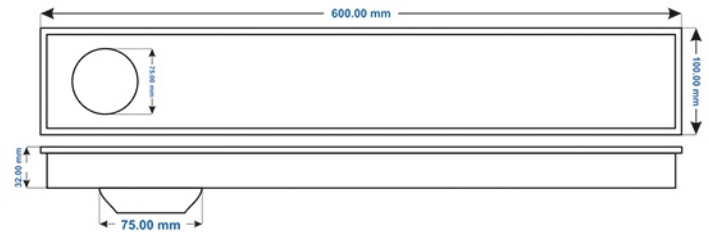


CHANNEL DRAIN



PR-101 (SQUARE)

Thickness : Base : 1.0 mm | Plate : 1.0 mm
 Outlet : 40 mm / 75 mm
 Flow Rate : 40-60 Liters / Minute
 Drainage Direction : Side / Center (can be customized)



SIZE L x W			HEIGHT (MM)	OUTLET DIA (MM)	SATTIN	PVD GOLD R GOLD	PVD BLACK	PC. BLACK
MM	CM	INCH						
75 x 300	7.5 x 30	3" x 12"	32	40	2000/-	3440/-	4867/-	2400/-
75 x 450	7.5 x 45	3" x 18"	32	40	3000/-	5160/-	7200/-	3600/-
75 x 600	7.5 x 60	3" x 24"	32	40	4000/-	6880/-	9533/-	4800/-
75 x 750	7.5 x 75	3" x 30"	32	40	5000/-	8600/-	11833/-	6000/-
75 x 800	7.5 x 80	3" x 32"	32	40	5333/-	9173/-	12600/-	6400/-
75 x 900	7.5 x 90	3" x 36"	32	40	6000/-	10320/-	14133/-	7200/-
75 x 1050	7.5 x 105	3" x 42"	32	40	7000/-	12040/-	16466/-	8400/-
75 x 1200	7.5 x 120	3" x 48"	32	40	8000/-	13760/-	18799/-	9600/-
100 x 300	10 x 30	4" x 12"	32	75	2120/-	3720/-	5420/-	2600/-
100 x 450	10 x 45	4" x 18"	32	75	3180/-	5580/-	8015/-	3900/-
100 x 600	10 x 60	4" x 24"	32	75	4240/-	7440/-	10640/-	5200/-
100 x 750	10 x 75	4" x 30"	32	75	5300/-	9300/-	13235/-	6500/-
100 x 800	10 x 80	4" x 32"	32	75	5653/-	9920/-	14085/-	6933/-
100 x 900	10 x 90	4" x 36"	32	75	6360/-	11160/-	15725/-	7800/-
100 x 1050	10 x 105	4" x 42"	32	75	7420/-	13020/-	18240/-	9100/-
100 x 1200	10 x 120	4" x 48"	32	75	8480/-	14880/-	21015/-	10400/-

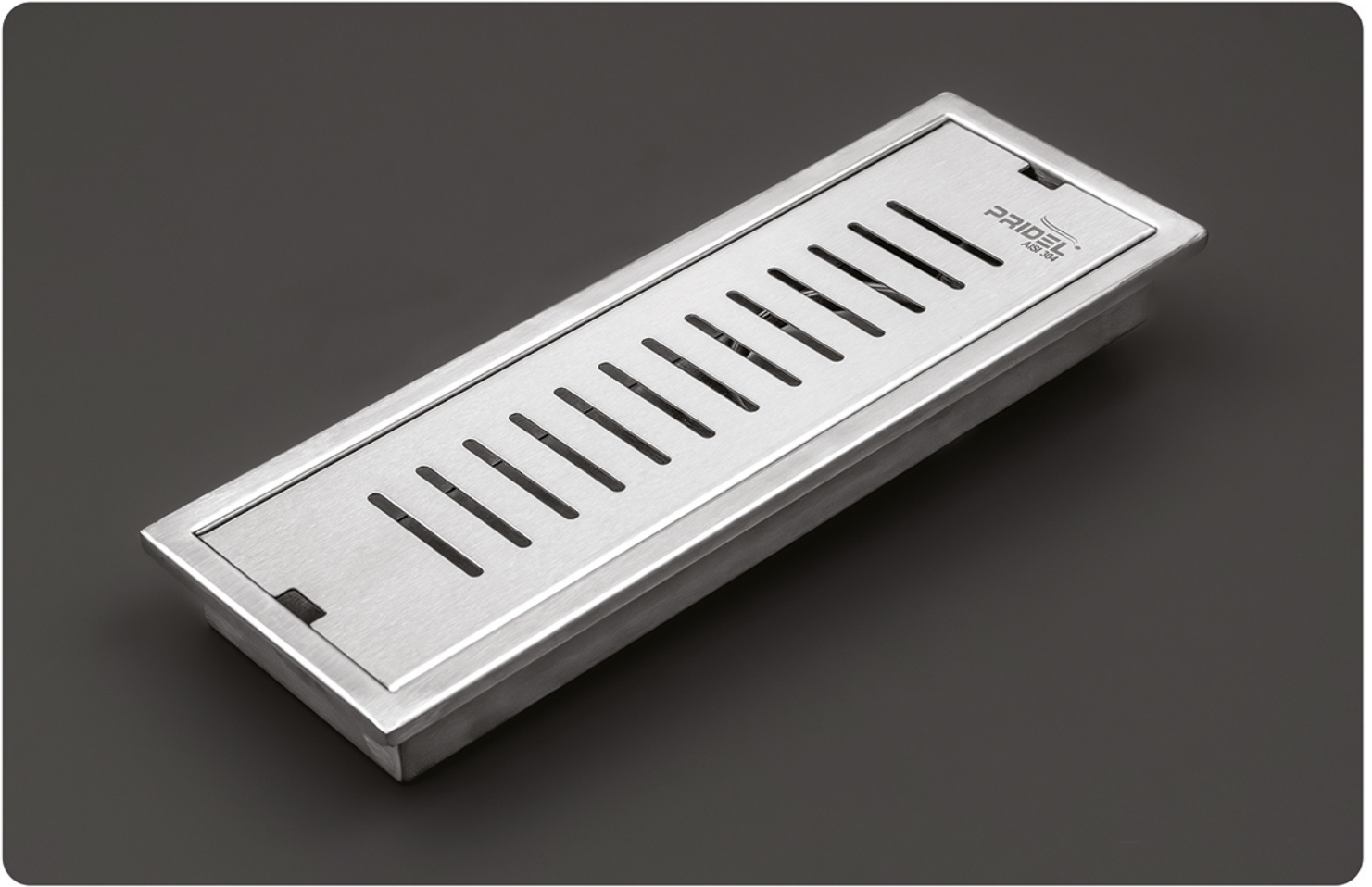
Application

- » Bathrooms
- » Terrace
- » Washing Area
- » Balconies
- » Lobbies
- » Drainage Area

Available Color

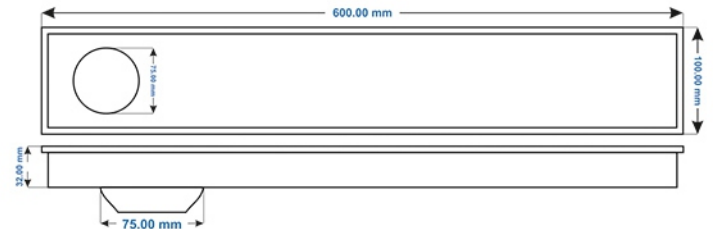


CHANNEL DRAIN



PR-102 (LINE)

Thickness : Base : 1.0 mm | Plate : 1.0 mm
 Outlet : 40 mm / 75 mm
 Flow Rate : 40-60 Liters / Minute
 Drainage Direction : Side / Center (can be customized)



- Application**
- » Bathrooms
 - » Terrace
 - » Washing Area
 - » Balconies
 - » Lobbies
 - » Drainage Area

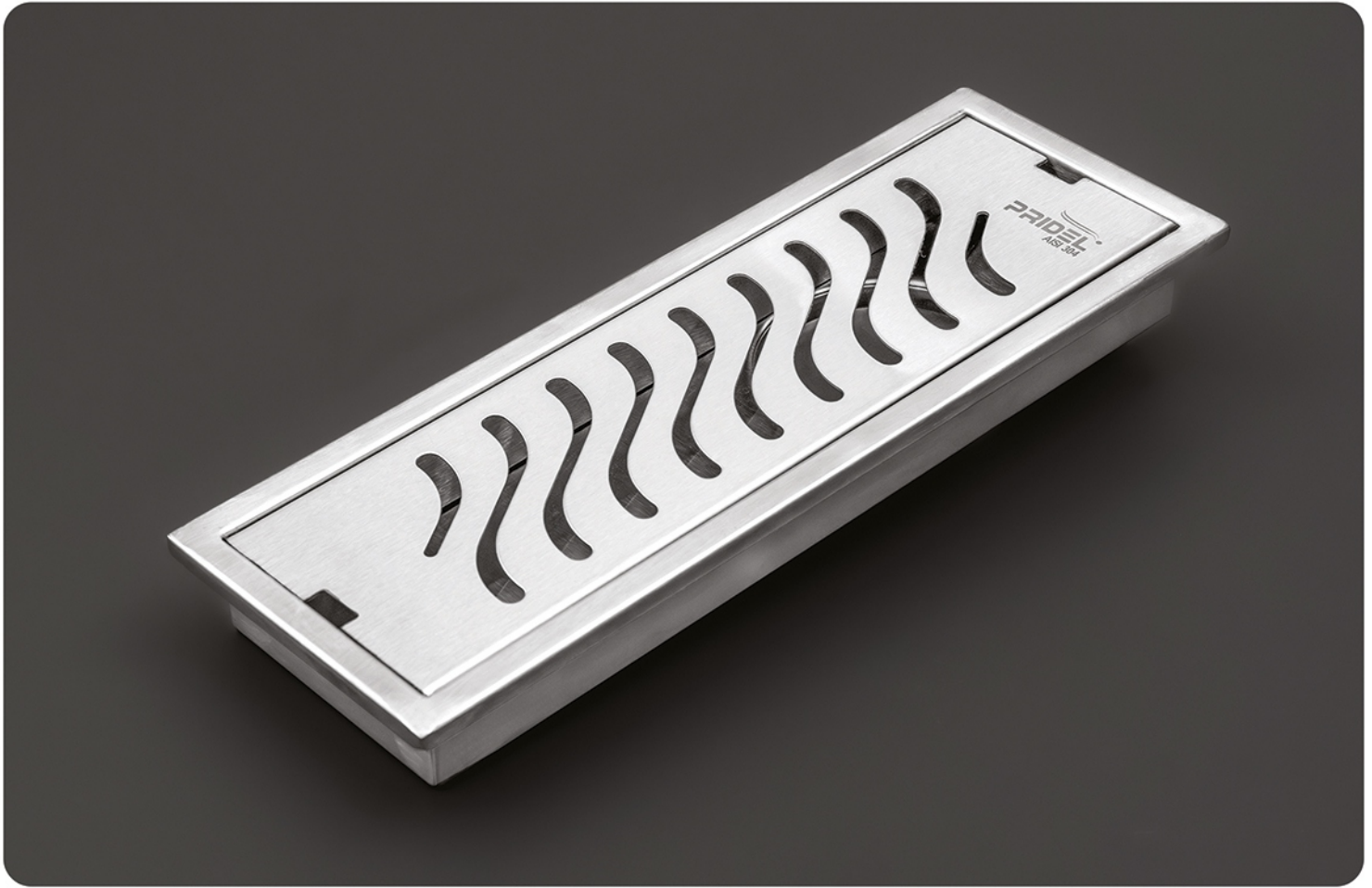
Available Color



SIZE L x W			HEIGHT (MM)	OUTLET DIA (MM)	SATTIN	PVD GOLD R GOLD	PVD BLACK	PC. BLACK
MM	CM	INCH						
75 x 300	7.5 x 30	3" x 12"	32	40	2000/-	3440/-	4867/-	2400/-
75 x 450	7.5 x 45	3" x 18"	32	40	3000/-	5160/-	7200/-	3600/-
75 x 600	7.5 x 60	3" x 24"	32	40	4000/-	6880/-	9533/-	4800/-
75 x 750	7.5 x 75	3" x 30"	32	40	5000/-	8600/-	11833/-	6000/-
75 x 800	7.5 x 80	3" x 32"	32	40	5333/-	9173/-	12600/-	6400/-
75 x 900	7.5 x 90	3" x 36"	32	40	6000/-	10320/-	14133/-	7200/-
75 x 1050	7.5 x 105	3" x 42"	32	40	7000/-	12040/-	16466/-	8400/-
75 x 1200	7.5 x 120	3" x 48"	32	40	8000/-	13760/-	18799/-	9600/-
100 x 300	10 x 30	4" x 12"	32	75	2120/-	3720/-	5420/-	2600/-
100 x 450	10 x 45	4" x 18"	32	75	3180/-	5580/-	8015/-	3900/-
100 x 600	10 x 60	4" x 24"	32	75	4240/-	7440/-	10640/-	5200/-
100 x 750	10 x 75	4" x 30"	32	75	5300/-	9300/-	13235/-	6500/-
100 x 800	10 x 80	4" x 32"	32	75	5653/-	9920/-	14085/-	6933/-
100 x 900	10 x 90	4" x 36"	32	75	6360/-	11160/-	15725/-	7800/-
100 x 1050	10 x 105	4" x 42"	32	75	7420/-	13020/-	18240/-	9100/-
100 x 1200	10 x 120	4" x 48"	32	75	8480/-	14880/-	21015/-	10400/-

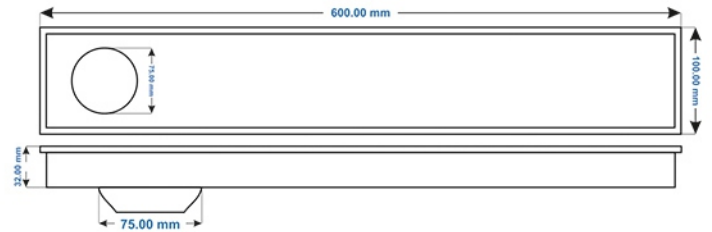


CHANNEL DRAIN



PR-103 (WAVE)

Thickness : Base : 1.0 mm | Plate : 1.0 mm
 Outlet : 40 mm / 75 mm
 Flow Rate : 40-60 Liters / Minute
 Drainage Direction : Side / Center (can be customized)



SIZE L x W			HEIGHT (MM)	OUTLET DIA (MM)	SATTIN	PVD GOLD R GOLD	PVD BLACK	PC. BLACK
MM	CM	INCH						
75 x 300	7.5 x 30	3" x 12"	32	40	2000/-	3440/-	4867/-	2400/-
75 x 450	7.5 x 45	3" x 18"	32	40	3000/-	5160/-	7200/-	3600/-
75 x 600	7.5 x 60	3" x 24"	32	40	4000/-	6880/-	9533/-	4800/-
75 x 750	7.5 x 75	3" x 30"	32	40	5000/-	8600/-	11833/-	6000/-
75 x 800	7.5 x 80	3" x 32"	32	40	5333/-	9173/-	12600/-	6400/-
75 x 900	7.5 x 90	3" x 36"	32	40	6000/-	10320/-	14133/-	7200/-
75 x 1050	7.5 x 105	3" x 42"	32	40	7000/-	12040/-	16466/-	8400/-
75 x 1200	7.5 x 120	3" x 48"	32	40	8000/-	13760/-	18799/-	9600/-
100 x 300	10 x 30	4" x 12"	32	75	2120/-	3720/-	5420/-	2600/-
100 x 450	10 x 45	4" x 18"	32	75	3180/-	5580/-	8015/-	3900/-
100 x 600	10 x 60	4" x 24"	32	75	4240/-	7440/-	10640/-	5200/-
100 x 750	10 x 75	4" x 30"	32	75	5300/-	9300/-	13235/-	6500/-
100 x 800	10 x 80	4" x 32"	32	75	5653/-	9920/-	14085/-	6933/-
100 x 900	10 x 90	4" x 36"	32	75	6360/-	11160/-	15725/-	7800/-
100 x 1050	10 x 105	4" x 42"	32	75	7420/-	13020/-	18240/-	9100/-
100 x 1200	10 x 120	4" x 48"	32	75	8480/-	14880/-	21015/-	10400/-

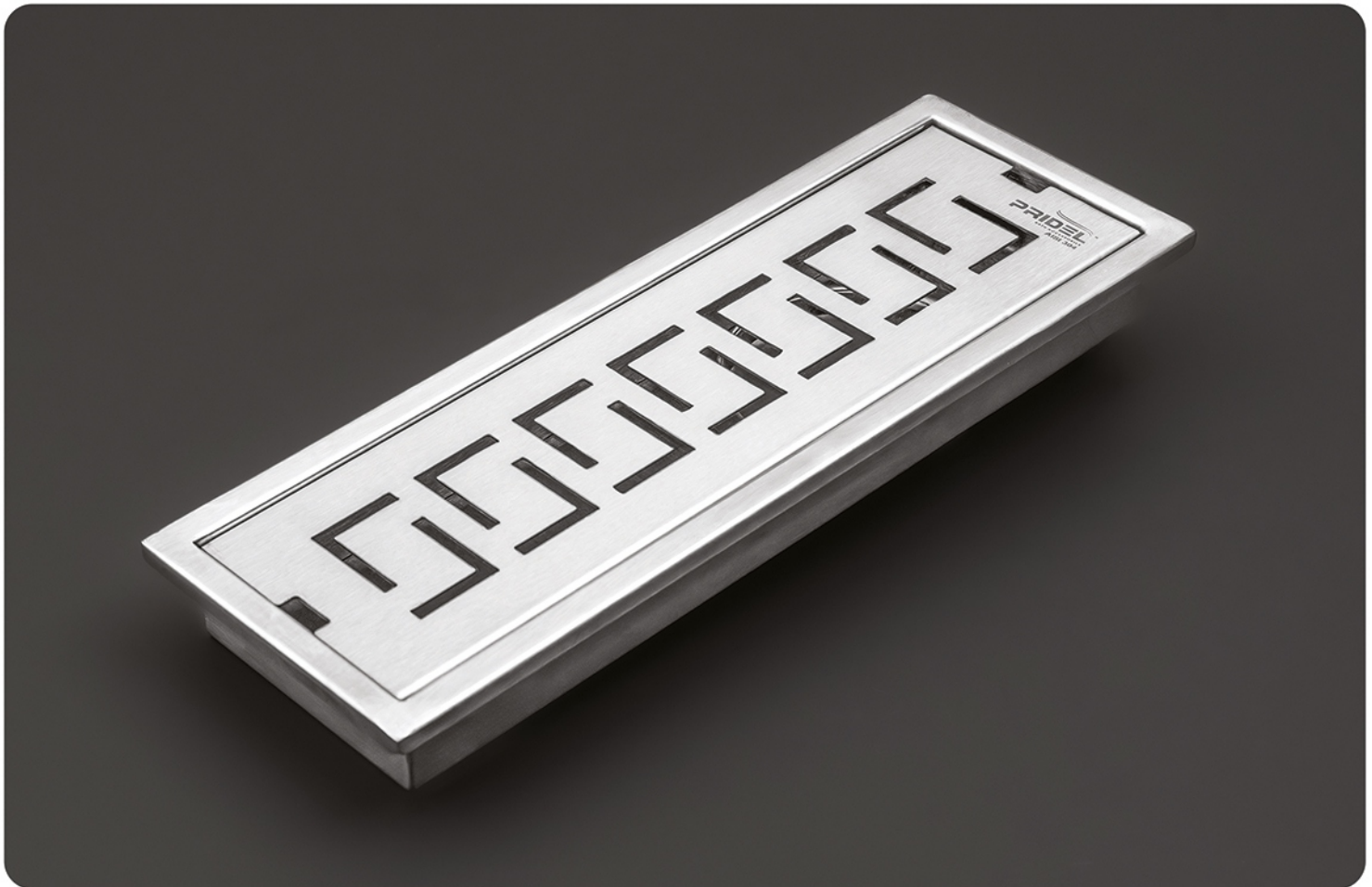
Application

- » Bathrooms
- » Terrace
- » Washing Area
- » Balconies
- » Lobbies
- » Drainage Area

Available Color

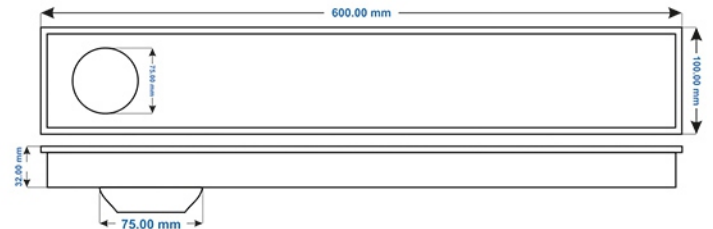


CHANNEL DRAIN



PR-104 (GREEK KEY)

Thickness : Base : 1.0 mm | Plate : 1.0 mm
 Outlet : 40 mm / 75 mm
 Flow Rate : 40-60 Liters / Minute
 Drainage Direction : Side / Center (can be customized)



- Application**
- » Bathrooms
 - » Terrace
 - » Washing Area
 - » Balconies
 - » Lobbies
 - » Drainage Area

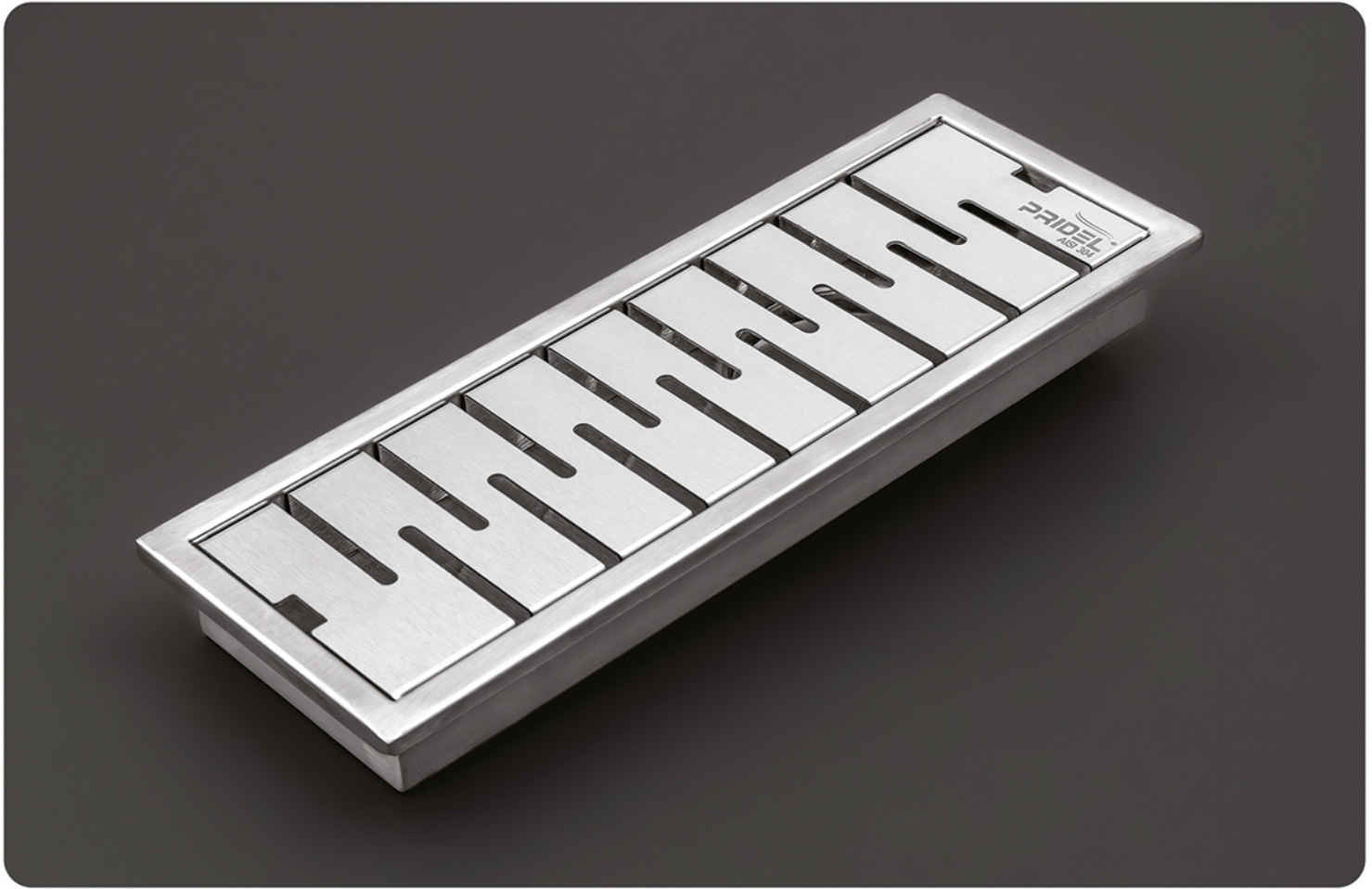
Available Color



SIZE L x W			HEIGHT (MM)	OUTLET DIA (MM)	SATTIN	PVD GOLD R GOLD	PVD BLACK	PC. BLACK
MM	CM	INCH						
75 x 300	7.5 x 30	3" x 12"	32	40	2000/-	3440/-	4867/-	2400/-
75 x 450	7.5 x 45	3" x 18"	32	40	3000/-	5160/-	7200/-	3600/-
75 x 600	7.5 x 60	3" x 24"	32	40	4000/-	6880/-	9533/-	4800/-
75 x 750	7.5 x 75	3" x 30"	32	40	5000/-	8600/-	11833/-	6000/-
75 x 800	7.5 x 80	3" x 32"	32	40	5333/-	9173/-	12600/-	6400/-
75 x 900	7.5 x 90	3" x 36"	32	40	6000/-	10320/-	14133/-	7200/-
75 x 1050	7.5 x 105	3" x 42"	32	40	7000/-	12040/-	16466/-	8400/-
75 x 1200	7.5 x 120	3" x 48"	32	40	8000/-	13760/-	18799/-	9600/-
100 x 300	10 x 30	4" x 12"	32	75	2120/-	3720/-	5420/-	2600/-
100 x 450	10 x 45	4" x 18"	32	75	3180/-	5580/-	8015/-	3900/-
100 x 600	10 x 60	4" x 24"	32	75	4240/-	7440/-	10640/-	5200/-
100 x 750	10 x 75	4" x 30"	32	75	5300/-	9300/-	13235/-	6500/-
100 x 800	10 x 80	4" x 32"	32	75	5653/-	9920/-	14085/-	6933/-
100 x 900	10 x 90	4" x 36"	32	75	6360/-	11160/-	15725/-	7800/-
100 x 1050	10 x 105	4" x 42"	32	75	7420/-	13020/-	18240/-	9100/-
100 x 1200	10 x 120	4" x 48"	32	75	8480/-	14880/-	21015/-	10400/-

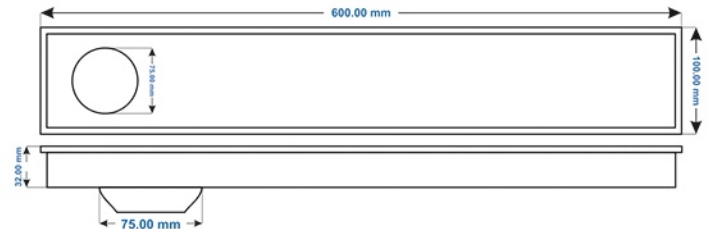


CHANNEL DRAIN



PR-105 (STEPS)

Thickness : Base : 1.0 mm | Plate : 1.0 mm
 Outlet : 40 mm / 75 mm
 Flow Rate : 40-60 Liters / Minute
 Drainage Direction : Side / Center (can be customized)



SIZE L x W			HEIGHT (MM)	OUTLET DIA (MM)	SATTIN	PVD GOLD R GOLD	PVD BLACK	PC. BLACK
MM	CM	INCH						
75 x 300	7.5 x 30	3" x 12"	32	40	2000/-	3440/-	4867/-	2400/-
75 x 450	7.5 x 45	3" x 18"	32	40	3000/-	5160/-	7200/-	3600/-
75 x 600	7.5 x 60	3" x 24"	32	40	4000/-	6880/-	9533/-	4800/-
75 x 750	7.5 x 75	3" x 30"	32	40	5000/-	8600/-	11833/-	6000/-
75 x 800	7.5 x 80	3" x 32"	32	40	5333/-	9173/-	12600/-	6400/-
75 x 900	7.5 x 90	3" x 36"	32	40	6000/-	10320/-	14133/-	7200/-
75 x 1050	7.5 x 105	3" x 42"	32	40	7000/-	12040/-	16466/-	8400/-
75 x 1200	7.5 x 120	3" x 48"	32	40	8000/-	13760/-	18799/-	9600/-
100 x 300	10 x 30	4" x 12"	32	75	2120/-	3720/-	5420/-	2600/-
100 x 450	10 x 45	4" x 18"	32	75	3180/-	5580/-	8015/-	3900/-
100 x 600	10 x 60	4" x 24"	32	75	4240/-	7440/-	10640/-	5200/-
100 x 750	10 x 75	4" x 30"	32	75	5300/-	9300/-	13235/-	6500/-
100 x 800	10 x 80	4" x 32"	32	75	5653/-	9920/-	14085/-	6933/-
100 x 900	10 x 90	4" x 36"	32	75	6360/-	11160/-	15725/-	7800/-
100 x 1050	10 x 105	4" x 42"	32	75	7420/-	13020/-	18240/-	9100/-
100 x 1200	10 x 120	4" x 48"	32	75	8480/-	14880/-	21015/-	10400/-

Application

- » Bathrooms
- » Terrace
- » Washing Area
- » Balconies
- » Lobbies
- » Drainage Area

Available Color

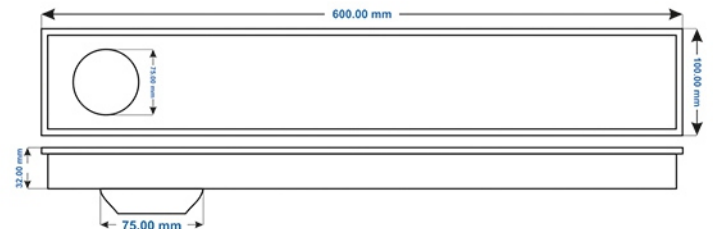


CHANNEL DRAIN



PR-106 (CAPSULE)

Thickness : Base : 1.0 mm | Plate : 1.0 mm
 Outlet : 40 mm / 75 mm
 Flow Rate : 40-60 Liters / Minute
 Drainage Direction : Side / Center (can be customized)

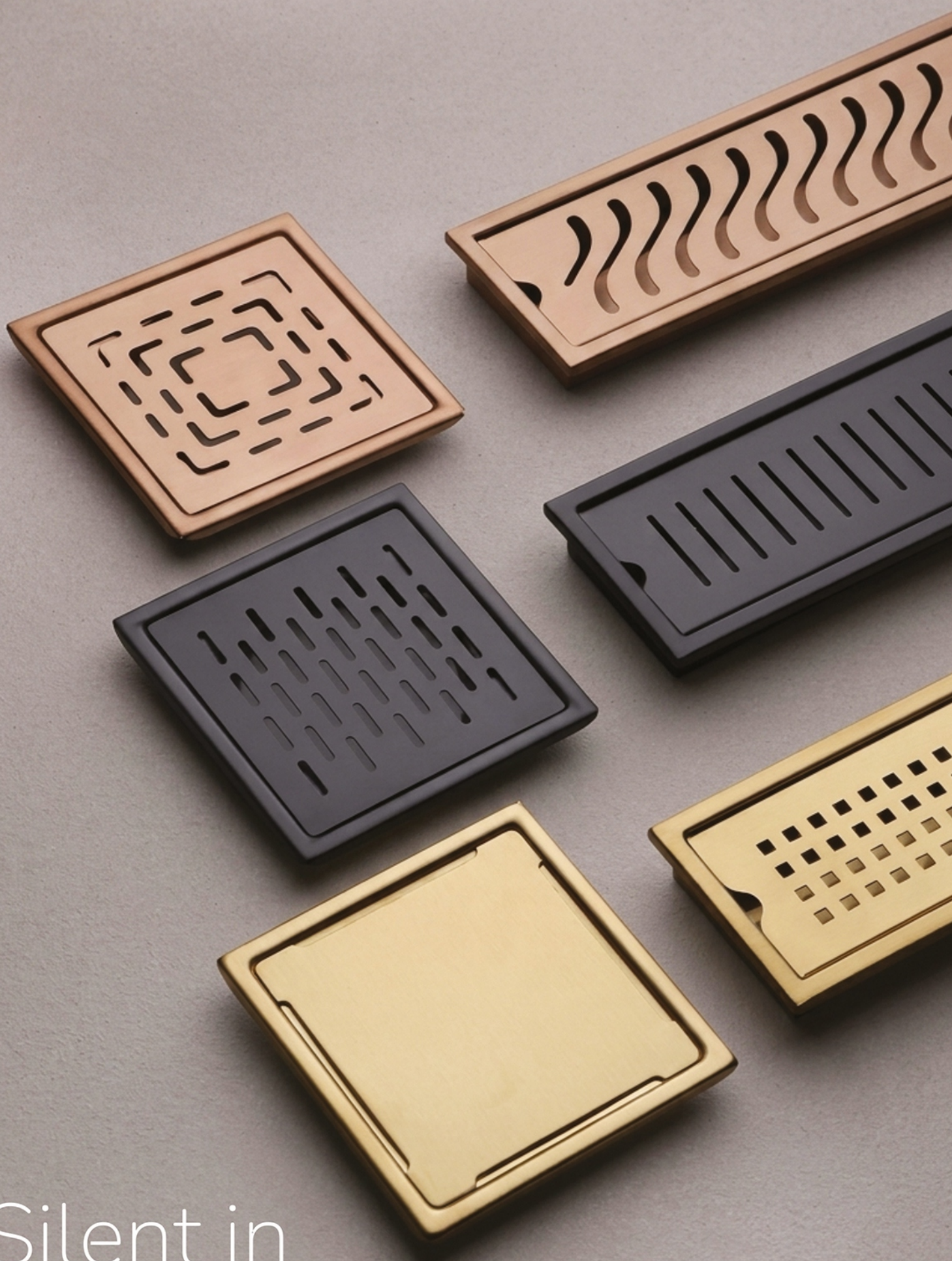


- Application**
- » Bathrooms
 - » Terrace
 - » Washing Area
 - » Balconies
 - » Lobbies
 - » Drainage Area

Available Color



SIZE L x W			HEIGHT (MM)	OUTLET DIA (MM)	SATIN	PVD GOLD R GOLD	PVD BLACK	PC. BLACK
MM	CM	INCH						
75 x 300	7.5 x 30	3" x 12"	32	40	2000/-	3440/-	4867/-	2400/-
75 x 450	7.5 x 45	3" x 18"	32	40	3000/-	5160/-	7200/-	3600/-
75 x 600	7.5 x 60	3" x 24"	32	40	4000/-	6880/-	9533/-	4800/-
75 x 750	7.5 x 75	3" x 30"	32	40	5000/-	8600/-	11833/-	6000/-
75 x 800	7.5 x 80	3" x 32"	32	40	5333/-	9173/-	12600/-	6400/-
75 x 900	7.5 x 90	3" x 36"	32	40	6000/-	10320/-	14133/-	7200/-
75 x 1050	7.5 x 105	3" x 42"	32	40	7000/-	12040/-	16466/-	8400/-
75 x 1200	7.5 x 120	3" x 48"	32	40	8000/-	13760/-	18799/-	9600/-
100 x 300	10 x 30	4" x 12"	32	75	2120/-	3720/-	5420/-	2600/-
100 x 450	10 x 45	4" x 18"	32	75	3180/-	5580/-	8015/-	3900/-
100 x 600	10 x 60	4" x 24"	32	75	4240/-	7440/-	10640/-	5200/-
100 x 750	10 x 75	4" x 30"	32	75	5300/-	9300/-	13235/-	6500/-
100 x 800	10 x 80	4" x 32"	32	75	5653/-	9920/-	14085/-	6933/-
100 x 900	10 x 90	4" x 36"	32	75	6360/-	11160/-	15725/-	7800/-
100 x 1050	10 x 105	4" x 42"	32	75	7420/-	13020/-	18240/-	9100/-
100 x 1200	10 x 120	4" x 48"	32	75	8480/-	14880/-	21015/-	10400/-



Silent in
Storm. *Every*" ✦

Invisible by
Design. ✨



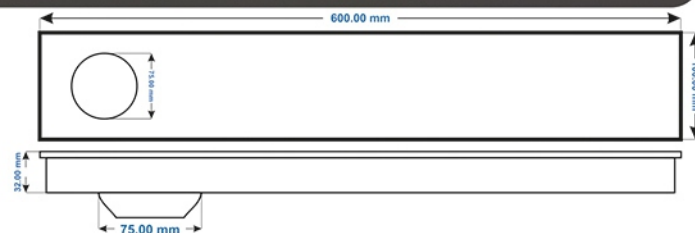


CHANNEL DRAIN (W/O KOLLAR)



PR-201 (SQUARE)

Thickness : Base : 1.0 mm | Plate : 1.0 mm
 Outlet : 40 mm / 75 mm
 Flow Rate : 40-60 Liters / Minute
 Drainage Direction : Side / Center (can be customized)



SIZE L x W			HEIGHT (MM)	OUTLET DIA (MM)	SATTIN	PVD GOLD R GOLD	PVD BLACK	PC. BLACK
MM	CM	INCH						
50 x 300	5 x 30	2" x 12"	32	40	1920/-	3200/-	3955/-	2280/-
50 x 450	5 x 45	2" x 18"	32	40	2880/-	4800/-	5780/-	3420/-
50 x 600	5 x 60	2" x 24"	32	40	3840/-	6400/-	7630/-	4560/-
50 x 750	5 x 75	2" x 30"	32	40	4800/-	8000/-	9466/-	5700/-
50 x 800	5 x 80	2" x 32"	32	40	5120/-	8533/-	10086/-	6080/-
50 x 900	5 x 90	2" x 36"	32	40	5760/-	9600/-	11293/-	6840/-
50 x 1050	5 x 105	2" x 42"	32	40	6720/-	11200/-	13153/-	7980/-
50 x 1200	5 x 120	2" x 48"	32	40	7680/-	12800/-	15612/-	9120/-
75 x 300	7.5 x 30	3" x 12"	32	40	2000/-	3440/-	4867/-	2400/-
75 x 450	7.5 x 45	3" x 18"	32	40	3000/-	5160/-	7200/-	3600/-
75 x 600	7.5 x 60	3" x 24"	32	40	4000/-	6880/-	9533/-	4800/-
75 x 750	7.5 x 75	3" x 30"	32	40	5000/-	8600/-	11833/-	6000/-
75 x 800	7.5 x 80	3" x 32"	32	40	5333/-	9173/-	12600/-	6400/-
75 x 900	7.5 x 90	3" x 36"	32	40	6000/-	10320/-	14133/-	7200/-
75 x 1050	7.5 x 105	3" x 42"	32	40	7000/-	12040/-	16466/-	8400/-
75 x 1200	7.5 x 120	3" x 48"	32	40	8000/-	13760/-	18799/-	9600/-
100 x 300	10 x 30	4" x 12"	32	75	2120/-	3720/-	5420/-	2600/-
100 x 450	10 x 45	4" x 18"	32	75	3180/-	5580/-	8015/-	3900/-
100 x 600	10 x 60	4" x 24"	32	75	4240/-	7440/-	10640/-	5200/-
100 x 750	10 x 75	4" x 30"	32	75	5300/-	9300/-	13235/-	6500/-
100 x 800	10 x 80	4" x 32"	32	75	5653/-	9920/-	14085/-	6933/-
100 x 900	10 x 90	4" x 36"	32	75	6360/-	11160/-	15725/-	7800/-
100 x 1050	10 x 105	4" x 42"	32	75	7420/-	13020/-	18240/-	9100/-
100 x 1200	10 x 120	4" x 48"	32	75	8480/-	14880/-	21015/-	10400/-

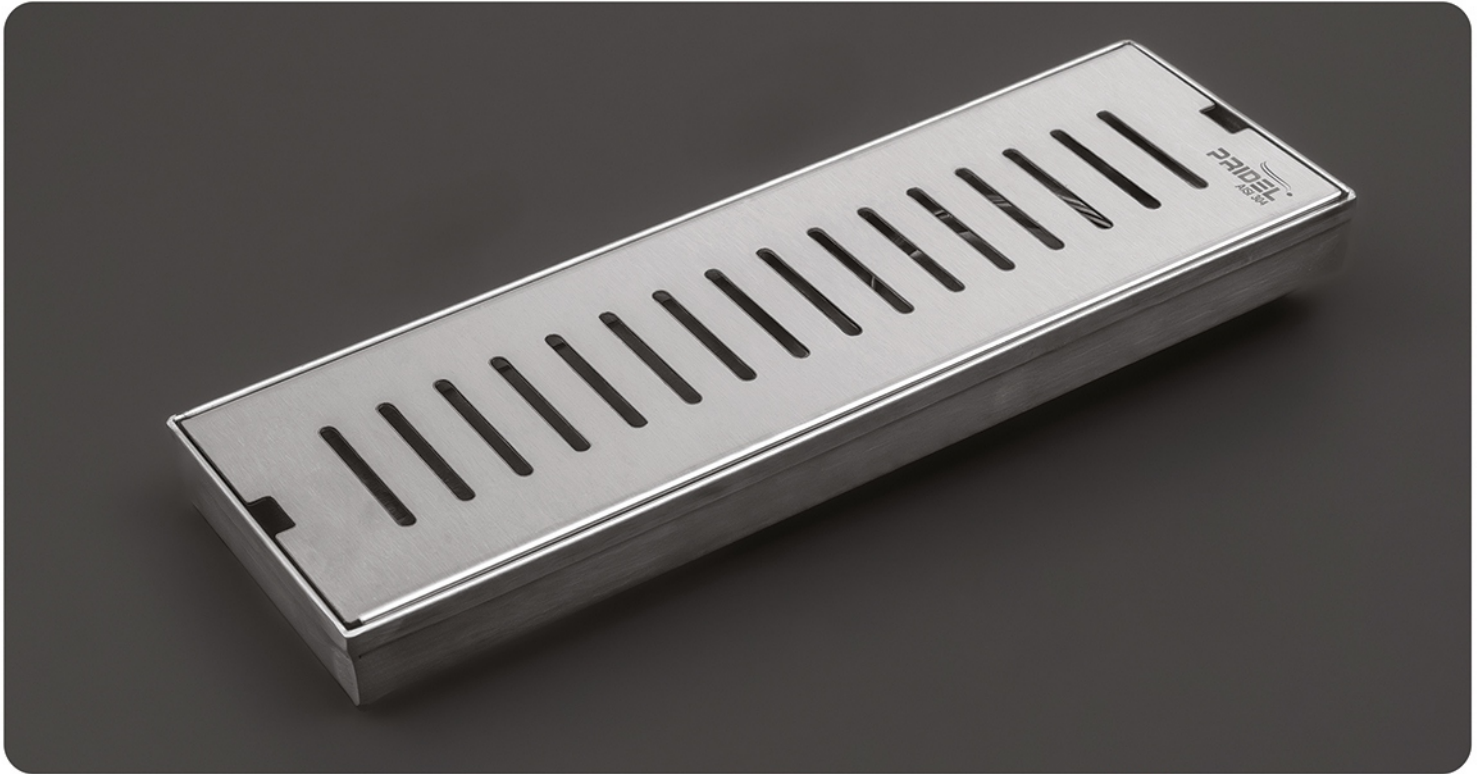
Application

- » Bathrooms
- » Terrace
- » Washing Area
- » Balconies
- » Lobbies
- » Drainage Area

Available Color

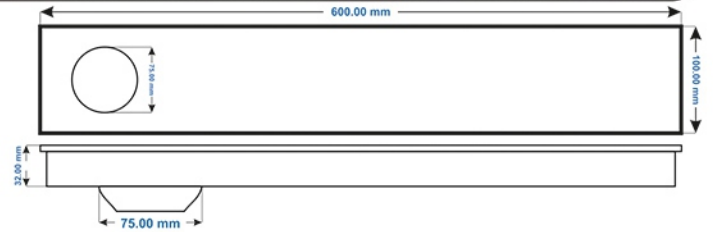


CHANNEL DRAIN (W/O KOLLAR) >>>



>>> PR-202 (LINE)

Thickness : Base : 1.0 mm | Plate : 1.0 mm
 Outlet : 40 mm / 75 mm
 Flow Rate : 40-60 Liters / Minute
 Drainage Direction : Side / Center (can be customized)



SIZE L x W			HEIGHT (MM)	OUTLET DIA (MM)	SATTIN	PVD GOLD R GOLD	PVD BLACK	P.C. BLACK
MM	CM	INCH						
50 x 300	5 x 30	2" x 12"	32	40	1920/-	3200/-	3955/-	2280/-
50 x 450	5 x 45	2" x 18"	32	40	2880/-	4800/-	5780/-	3420/-
50 x 600	5 x 60	2" x 24"	32	40	3840/-	6400/-	7630/-	4560/-
50 x 750	5 x 75	2" x 30"	32	40	4800/-	8000/-	9466/-	5700/-
50 x 800	5 x 80	2" x 32"	32	40	5120/-	8533/-	10086/-	6080/-
50 x 900	5 x 90	2" x 36"	32	40	5760/-	9600/-	11293/-	6840/-
50 x 1050	5 x 105	2" x 42"	32	40	6720/-	11200/-	13153/-	7980/-
50 x 1200	5 x 120	2" x 48"	32	40	7680/-	12800/-	15612/-	9120/-
75 x 300	7.5 x 30	3" x 12"	32	40	2000/-	3440/-	4867/-	2400/-
75 x 450	7.5 x 45	3" x 18"	32	40	3000/-	5160/-	7200/-	3600/-
75 x 600	7.5 x 60	3" x 24"	32	40	4000/-	6880/-	9533/-	4800/-
75 x 750	7.5 x 75	3" x 30"	32	40	5000/-	8600/-	11833/-	6000/-
75 x 800	7.5 x 80	3" x 32"	32	40	5333/-	9173/-	12600/-	6400/-
75 x 900	7.5 x 90	3" x 36"	32	40	6000/-	10320/-	14133/-	7200/-
75 x 1050	7.5 x 105	3" x 42"	32	40	7000/-	12040/-	16466/-	8400/-
75 x 1200	7.5 x 120	3" x 48"	32	40	8000/-	13760/-	18799/-	9600/-
100 x 300	10 x 30	4" x 12"	32	75	2120/-	3720/-	5420/-	2600/-
100 x 450	10 x 45	4" x 18"	32	75	3180/-	5580/-	8015/-	3900/-
100 x 600	10 x 60	4" x 24"	32	75	4240/-	7440/-	10640/-	5200/-
100 x 750	10 x 75	4" x 30"	32	75	5300/-	9300/-	13235/-	6500/-
100 x 800	10 x 80	4" x 32"	32	75	5653/-	9920/-	14085/-	6933/-
100 x 900	10 x 90	4" x 36"	32	75	6360/-	11160/-	15725/-	7800/-
100 x 1050	10 x 105	4" x 42"	32	75	7420/-	13020/-	18240/-	9100/-
100 x 1200	10 x 120	4" x 48"	32	75	8480/-	14880/-	21015/-	10400/-

Application

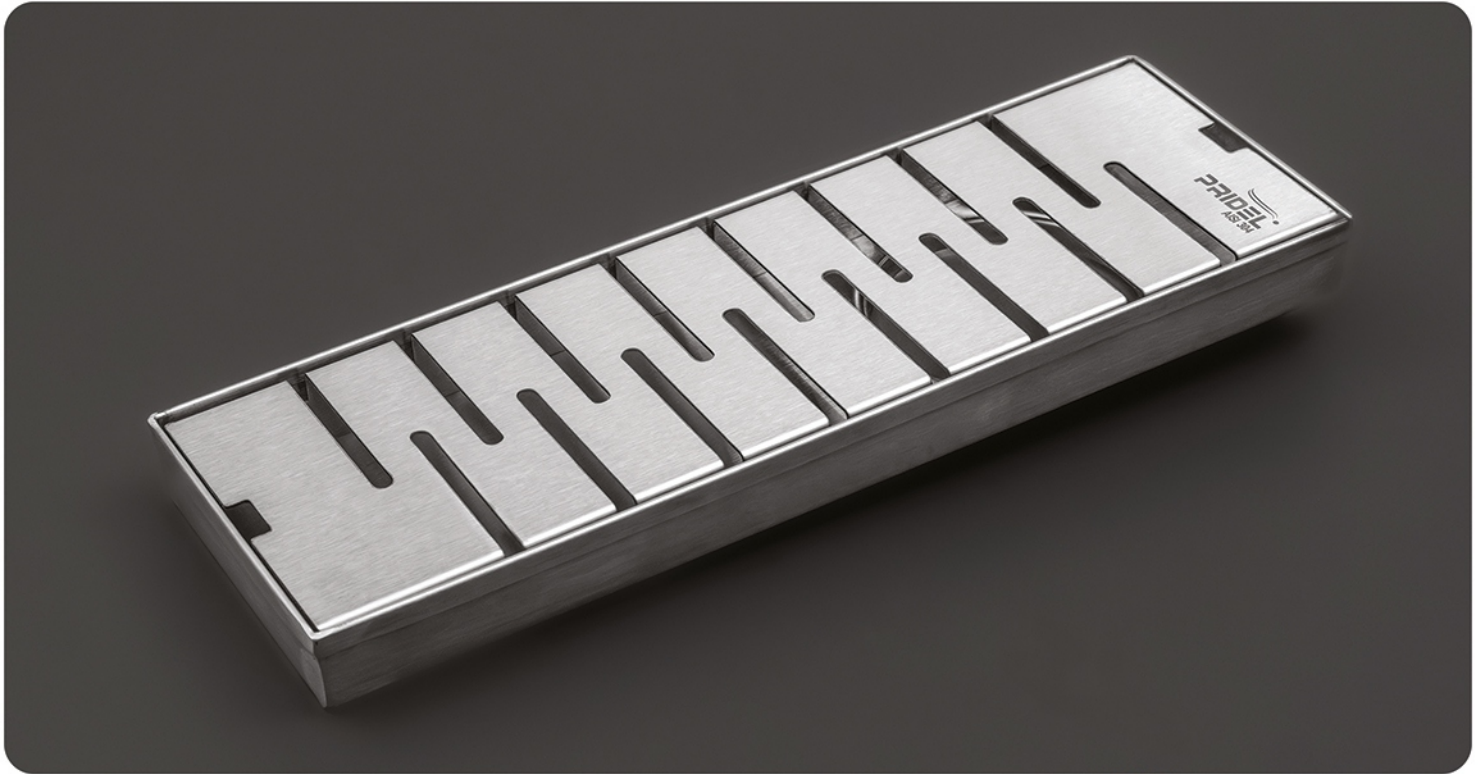
- >> Bathrooms
- >> Terrace
- >> Washing Area
- >> Balconies
- >> Lobbies
- >> Drainage Area

Available Color



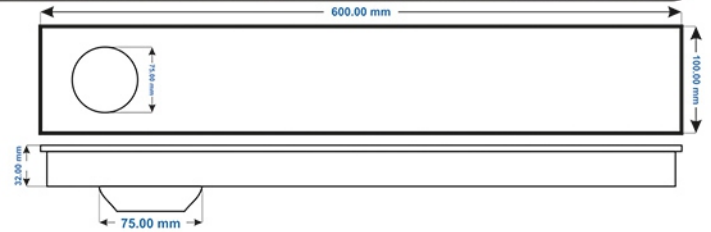


CHANNEL DRAIN (W/O KOLLAR)



PR-203 (WAVE)

Thickness : Base : 1.0 mm | Plate : 1.0 mm
 Outlet : 40 mm / 75 mm
 Flow Rate : 40-60 Liters / Minute
 Drainage Direction : Side / Center (can be customized)



SIZE L x W			HEIGHT (MM)	OUTLET DIA (MM)	SATIN	PVD GOLD R GOLD	PVD BLACK	P.C. BLACK
MM	CM	INCH						
50 x 300	5 x 30	2" x 12"	32	40	1920/-	3200/-	3955/-	2280/-
50 x 450	5 x 45	2" x 18"	32	40	2880/-	4800/-	5780/-	3420/-
50 x 600	5 x 60	2" x 24"	32	40	3840/-	6400/-	7630/-	4560/-
50 x 750	5 x 75	2" x 30"	32	40	4800/-	8000/-	9466/-	5700/-
50 x 800	5 x 80	2" x 32"	32	40	5120/-	8533/-	10086/-	6080/-
50 x 900	5 x 90	2" x 36"	32	40	5760/-	9600/-	11293/-	6840/-
50 x 1050	5 x 105	2" x 42"	32	40	6720/-	11200/-	13153/-	7980/-
50 x 1200	5 x 120	2" x 48"	32	40	7680/-	12800/-	15612/-	9120/-
75 x 300	7.5 x 30	3" x 12"	32	40	2000/-	3440/-	4867/-	2400/-
75 x 450	7.5 x 45	3" x 18"	32	40	3000/-	5160/-	7200/-	3600/-
75 x 600	7.5 x 60	3" x 24"	32	40	4000/-	6880/-	9533/-	4800/-
75 x 750	7.5 x 75	3" x 30"	32	40	5000/-	8600/-	11833/-	6000/-
75 x 800	7.5 x 80	3" x 32"	32	40	5333/-	9173/-	12600/-	6400/-
75 x 900	7.5 x 90	3" x 36"	32	40	6000/-	10320/-	14133/-	7200/-
75 x 1050	7.5 x 105	3" x 42"	32	40	7000/-	12040/-	16466/-	8400/-
75 x 1200	7.5 x 120	3" x 48"	32	40	8000/-	13760/-	18799/-	9600/-
100 x 300	10 x 30	4" x 12"	32	75	2120/-	3720/-	5420/-	2600/-
100 x 450	10 x 45	4" x 18"	32	75	3180/-	5580/-	8015/-	3900/-
100 x 600	10 x 60	4" x 24"	32	75	4240/-	7440/-	10640/-	5200/-
100 x 750	10 x 75	4" x 30"	32	75	5300/-	9300/-	13235/-	6500/-
100 x 800	10 x 80	4" x 32"	32	75	5653/-	9920/-	14085/-	6933/-
100 x 900	10 x 90	4" x 36"	32	75	6360/-	11160/-	15725/-	7800/-
100 x 1050	10 x 105	4" x 42"	32	75	7420/-	13020/-	18240/-	9100/-
100 x 1200	10 x 120	4" x 48"	32	75	8480/-	14880/-	21015/-	10400/-

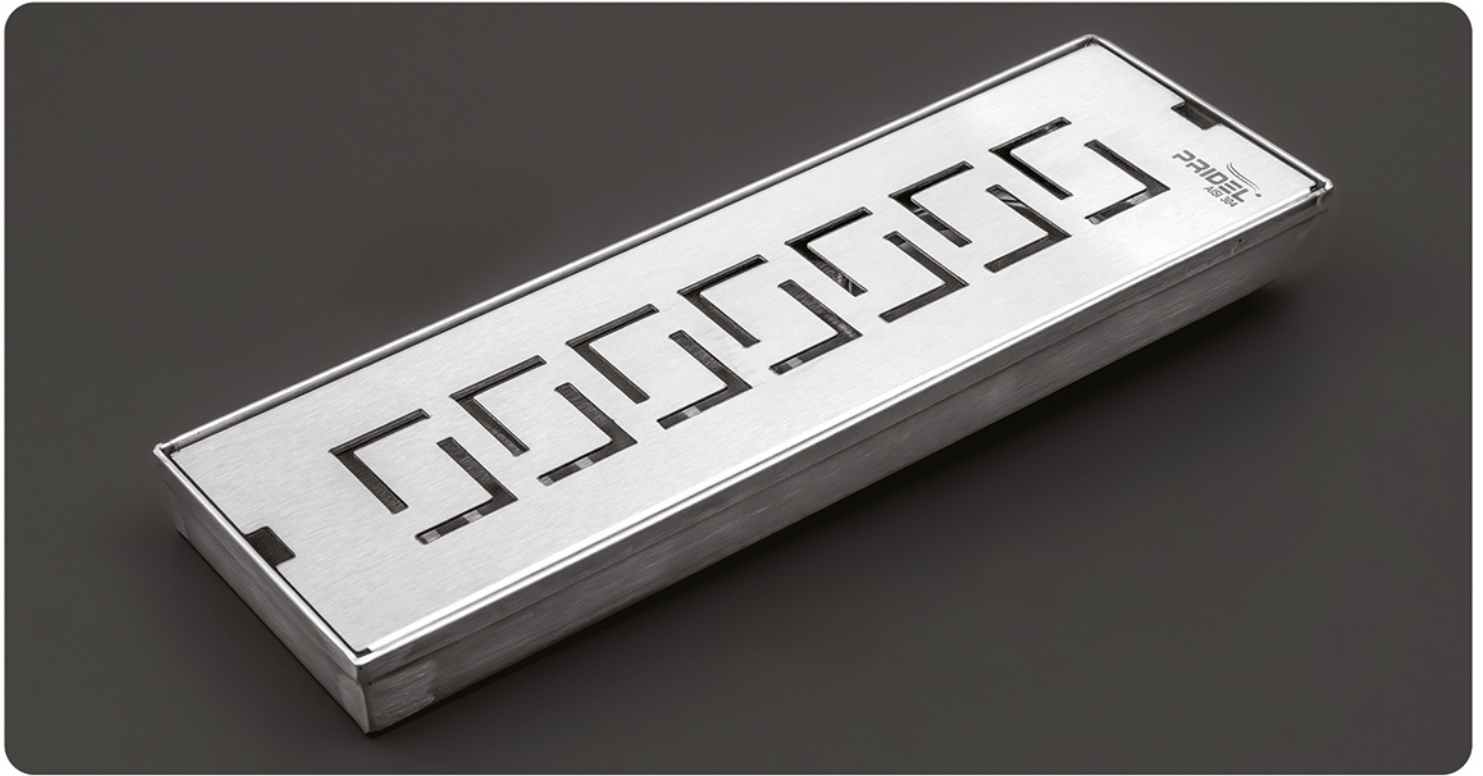
Application

- » Bathrooms
- » Terrace
- » Washing Area
- » Balconies
- » Lobbies
- » Drainage Area

Available Color

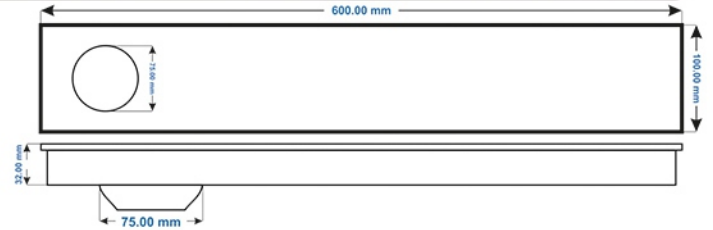


CHANNEL DRAIN (W/O KOLLAR) >>>



>>> PR-204 (GREEK KEY)

Thickness : Base : 1.0 mm | Plate : 1.0 mm
 Outlet : 40 mm / 75 mm
 Flow Rate : 40-60 Liters / Minute
 Drainage Direction : Side / Center (can be customized)



SIZE L x W			HEIGHT (MM)	OUTLET DIA (MM)	SATTIN	PVD GOLD R GOLD	PVD BLACK	PC. BLACK
MM	CM	INCH						
50 x 300	5 x 30	2" x 12"	32	40	1920/-	3200/-	3955/-	2280/-
50 x 450	5 x 45	2" x 18"	32	40	2880/-	4800/-	5780/-	3420/-
50 x 600	5 x 60	2" x 24"	32	40	3840/-	6400/-	7630/-	4560/-
50 x 750	5 x 75	2" x 30"	32	40	4800/-	8000/-	9466/-	5700/-
50 x 800	5 x 80	2" x 32"	32	40	5120/-	8533/-	10086/-	6080/-
50 x 900	5 x 90	2" x 36"	32	40	5760/-	9600/-	11293/-	6840/-
50 x 1050	5 x 105	2" x 42"	32	40	6720/-	11200/-	13153/-	7980/-
50 x 1200	5 x 120	2" x 48"	32	40	7680/-	12800/-	15612/-	9120/-
75 x 300	7.5 x 30	3" x 12"	32	40	2000/-	3440/-	4867/-	2400/-
75 x 450	7.5 x 45	3" x 18"	32	40	3000/-	5160/-	7200/-	3600/-
75 x 600	7.5 x 60	3" x 24"	32	40	4000/-	6880/-	9533/-	4800/-
75 x 750	7.5 x 75	3" x 30"	32	40	5000/-	8600/-	11833/-	6000/-
75 x 800	7.5 x 80	3" x 32"	32	40	5333/-	9173/-	12600/-	6400/-
75 x 900	7.5 x 90	3" x 36"	32	40	6000/-	10320/-	14133/-	7200/-
75 x 1050	7.5 x 105	3" x 42"	32	40	7000/-	12040/-	16466/-	8400/-
75 x 1200	7.5 x 120	3" x 48"	32	40	8000/-	13760/-	18799/-	9600/-
100 x 300	10 x 30	4" x 12"	32	75	2120/-	3720/-	5420/-	2600/-
100 x 450	10 x 45	4" x 18"	32	75	3180/-	5580/-	8015/-	3900/-
100 x 600	10 x 60	4" x 24"	32	75	4240/-	7440/-	10640/-	5200/-
100 x 750	10 x 75	4" x 30"	32	75	5300/-	9300/-	13235/-	6500/-
100 x 800	10 x 80	4" x 32"	32	75	5653/-	9920/-	14085/-	6933/-
100 x 900	10 x 90	4" x 36"	32	75	6360/-	11160/-	15725/-	7800/-
100 x 1050	10 x 105	4" x 42"	32	75	7420/-	13020/-	18240/-	9100/-
100 x 1200	10 x 120	4" x 48"	32	75	8480/-	14880/-	21015/-	10400/-

Application

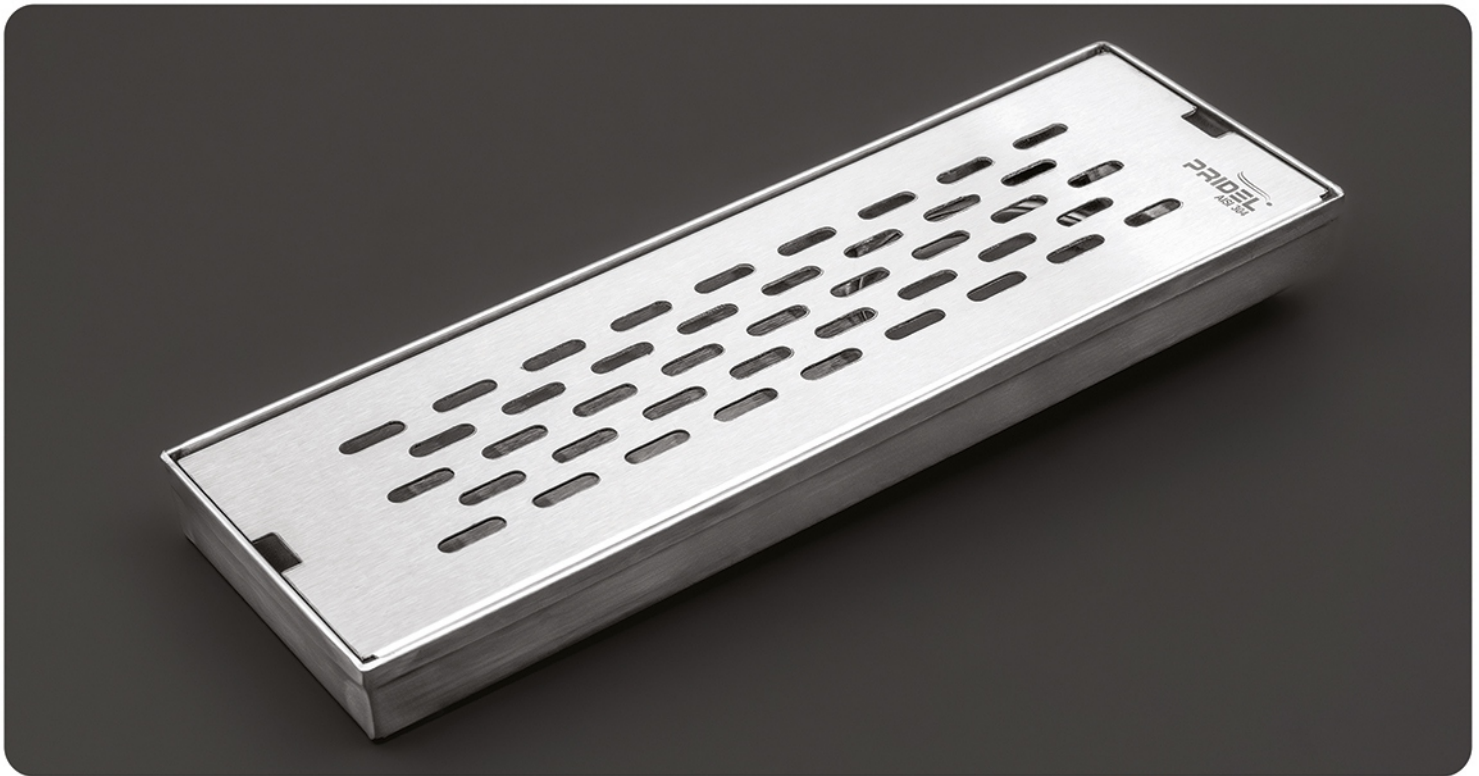
- >> Bathrooms
- >> Terrace
- >> Washing Area
- >> Balconies
- >> Lobbies
- >> Drainage Area

Available Color



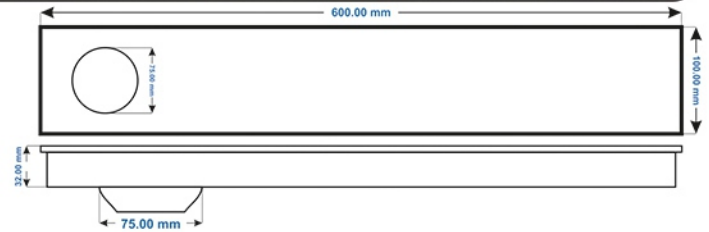


CHANNEL DRAIN (W/O KOLLAR)



PR-205 (CAPSULE)

Thickness : Base : 1.0 mm | Plate : 1.0 mm
 Outlet : 40 mm / 75 mm
 Flow Rate : 40-60 Liters / Minute
 Drainage Direction : Side / Center (can be customized)



SIZE L x W			HEIGHT (MM)	OUTLET DIA (MM)	SATTIN	PVD GOLD R GOLD	PVD BLACK	PC. BLACK
MM	CM	INCH						
50 x 300	5 x 30	2" x 12"	32	40	1920/-	3200/-	3955/-	2280/-
50 x 450	5 x 45	2" x 18"	32	40	2880/-	4800/-	5780/-	3420/-
50 x 600	5 x 60	2" x 24"	32	40	3840/-	6400/-	7630/-	4560/-
50 x 750	5 x 75	2" x 30"	32	40	4800/-	8000/-	9466/-	5700/-
50 x 800	5 x 80	2" x 32"	32	40	5120/-	8533/-	10086/-	6080/-
50 x 900	5 x 90	2" x 36"	32	40	5760/-	9600/-	11293/-	6840/-
50 x 1050	5 x 105	2" x 42"	32	40	6720/-	11200/-	13153/-	7980/-
50 x 1200	5 x 120	2" x 48"	32	40	7680/-	12800/-	15612/-	9120/-
75 x 300	7.5 x 30	3" x 12"	32	40	2000/-	3440/-	4867/-	2400/-
75 x 450	7.5 x 45	3" x 18"	32	40	3000/-	5160/-	7200/-	3600/-
75 x 600	7.5 x 60	3" x 24"	32	40	4000/-	6880/-	9533/-	4800/-
75 x 750	7.5 x 75	3" x 30"	32	40	5000/-	8600/-	11833/-	6000/-
75 x 800	7.5 x 80	3" x 32"	32	40	5333/-	9173/-	12600/-	6400/-
75 x 900	7.5 x 90	3" x 36"	32	40	6000/-	10320/-	14133/-	7200/-
75 x 1050	7.5 x 105	3" x 42"	32	40	7000/-	12040/-	16466/-	8400/-
75 x 1200	7.5 x 120	3" x 48"	32	40	8000/-	13760/-	18799/-	9600/-
100 x 300	10 x 30	4" x 12"	32	75	2120/-	3720/-	5420/-	2600/-
100 x 450	10 x 45	4" x 18"	32	75	3180/-	5580/-	8015/-	3900/-
100 x 600	10 x 60	4" x 24"	32	75	4240/-	7440/-	10640/-	5200/-
100 x 750	10 x 75	4" x 30"	32	75	5300/-	9300/-	13235/-	6500/-
100 x 800	10 x 80	4" x 32"	32	75	5653/-	9920/-	14085/-	6933/-
100 x 900	10 x 90	4" x 36"	32	75	6360/-	11160/-	15725/-	7800/-
100 x 1050	10 x 105	4" x 42"	32	75	7420/-	13020/-	18240/-	9100/-
100 x 1200	10 x 120	4" x 48"	32	75	8480/-	14880/-	21015/-	10400/-

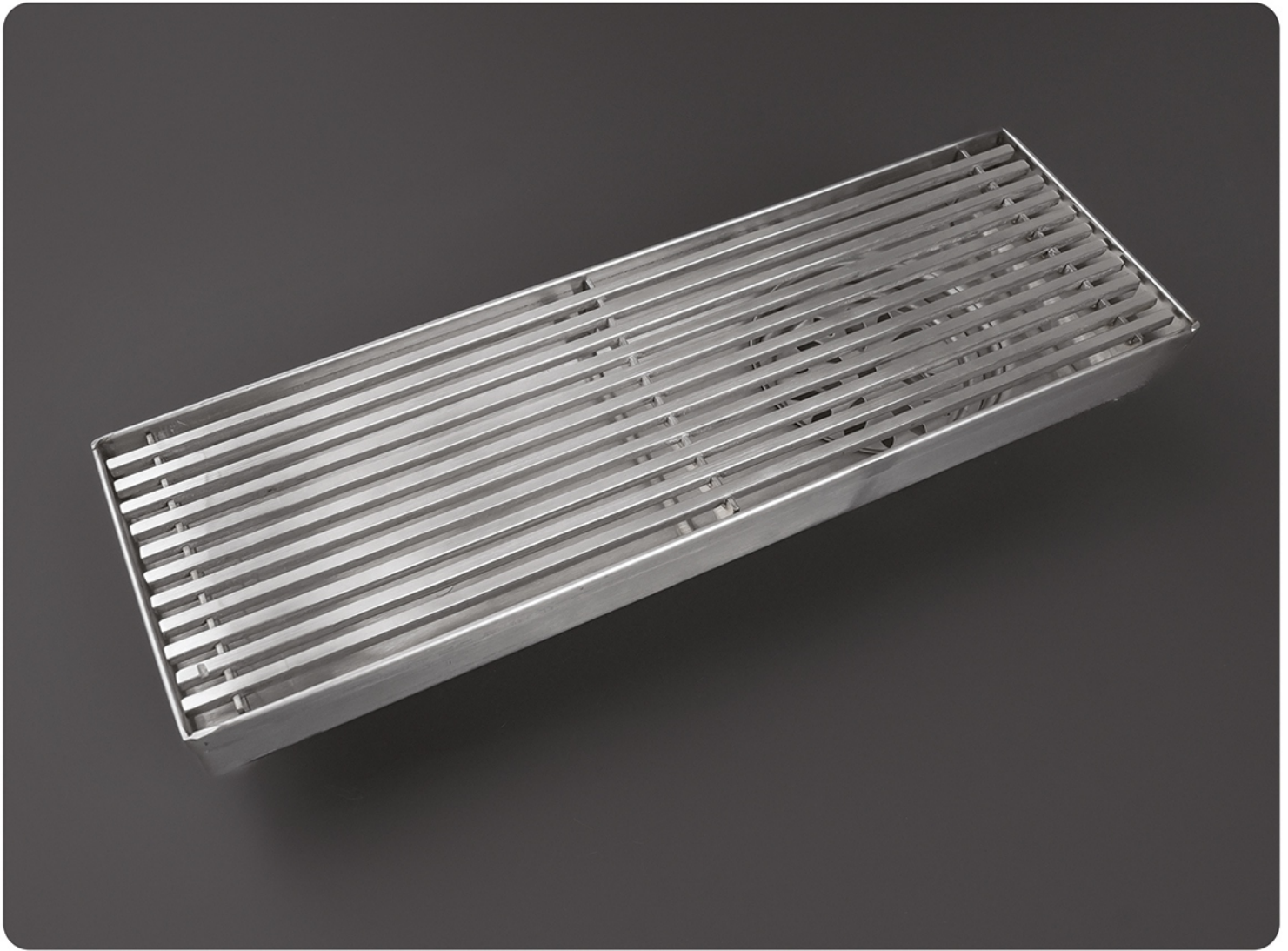
Application

- » Bathrooms
- » Terrace
- » Washing Area
- » Balconies
- » Lobbies
- » Drainage Area

Available Color

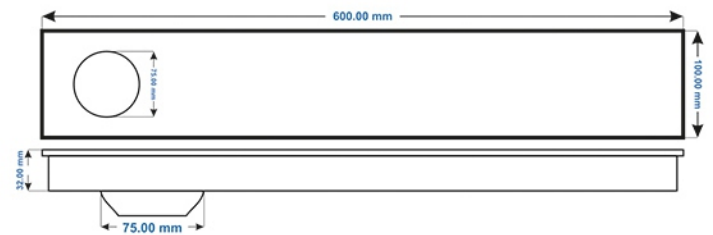


CHANNEL DRAIN (W/O KOLLAR) >>>



>>> PR-206 (GRILL)

Thickness : Base : 1.0 mm | Plate : 4.0 mm
 Outlet : 40 mm / 75 mm
 Flow Rate : 40-60 Liters / Minute
 Drainage Direction : Side / Center (can be customized)



Application

- >> Bathrooms
- >> Terrace
- >> Washing Area
- >> Balconies
- >> Lobbies
- >> Drainage Area

Available Color



SIZE L x W			HEIGHT (MM)	OUTLET DIA (MM)	SATIN	PVD GOLD R GOLD	PVD BLACK	PC. BLACK
MM	CM	INCH						
75 x 300	7.5 x 30	3" x 12"	32	40	2400/-	3840/-	5267/-	2752/-
75 x 450	7.5 x 45	3" x 18"	32	40	3600/-	5760/-	7800/-	4125/-
75 x 600	7.5 x 60	3" x 24"	32	40	4800/-	7680/-	10333/-	5496/-
75 x 750	7.5 x 75	3" x 30"	32	40	6000/-	9600/-	12833/-	6872/-
75 x 900	7.5 x 90	3" x 36"	32	40	7200/-	11520/-	15333/-	8245/-
75 x 1200	7.5 x 120	3" x 48"	32	40	9600/-	15360/-	20399/-	10988/-
100 x 300	10 x 30	4" x 12"	32	75	2480/-	4080/-	5780/-	2960/-
100 x 450	10 x 45	4" x 18"	32	75	3720/-	6120/-	8553/-	4440/-
100 x 600	10 x 60	4" x 24"	32	75	4960/-	8160/-	11360/-	5920/-
100 x 750	10 x 75	4" x 30"	32	75	6200/-	10200/-	14133/-	7400/-
100 x 900	10 x 90	4" x 36"	32	75	7440/-	12240/-	16806/-	8880/-
100 x 1200	10 x 120	4" x 48"	32	75	9920/-	16320/-	22452/-	11840/-

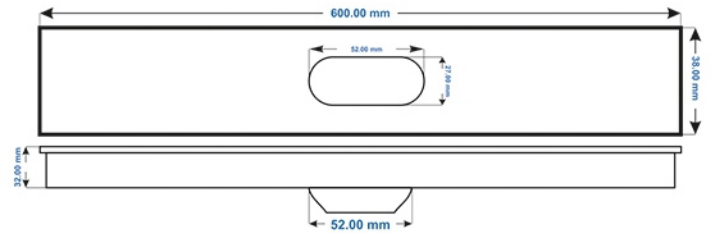


CHANNEL DRAIN (W/O KOLLAR)



PR-207 (SLIM)

Thickness : Base : 1.0 mm | Plate : 1.0 mm
 Outlet : 27 x 52 mm
 Flow Rate : 40-60 Liters / Minute
 Drainage Direction : Side / Center (can be customized)



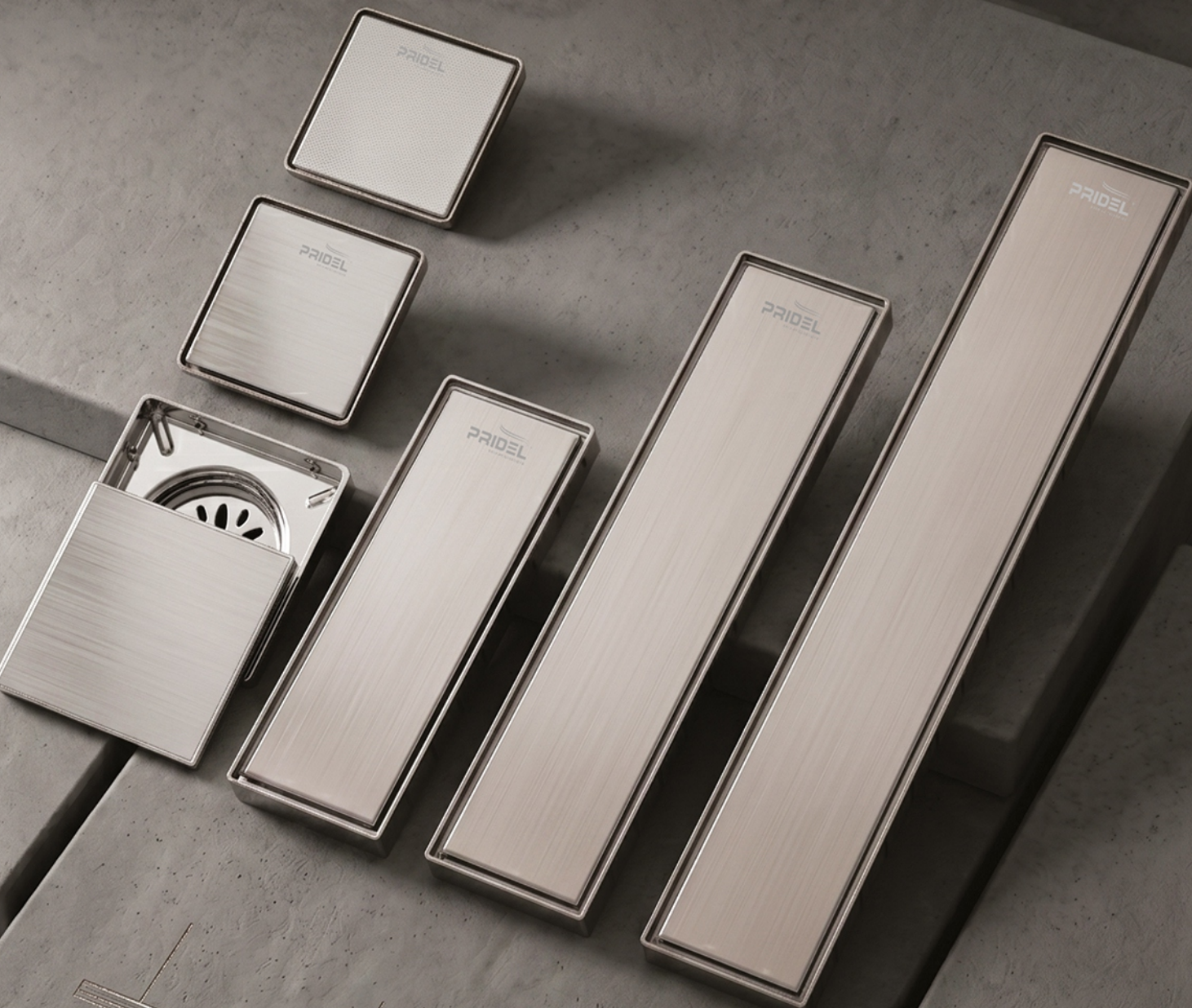
SIZE L x W			HEIGHT (MM)	OUTLET DIA (MM)	SATIN	PVD GOLD R GOLD	PVD BLACK
MM	CM	INCH					
38 x 300	3.8 x 30	1.5" x 12"	32	27 x 52	2080/-	2580/-	3080/-
38 x 450	3.8 x 45	1.5" x 18"	32	27 x 52	3120/-	3820/-	4620/-
38 x 600	3.8 x 60	1.5" x 24"	32	27 x 52	4160/-	5160/-	6160/-
38 x 750	3.8 x 75	1.5" x 30"	32	27 x 52	5200/-	6450/-	7760/-
38 x 900	3.8 x 90	1.5" x 36"	32	27 x 52	6240/-	7740/-	9240/-

Application

- » Bathrooms
- » Terrace
- » Washing Area
- » Balconies
- » Lobbies
- » Drainage Area

Available Color





Below *Crafted*
the Surface.” ✦



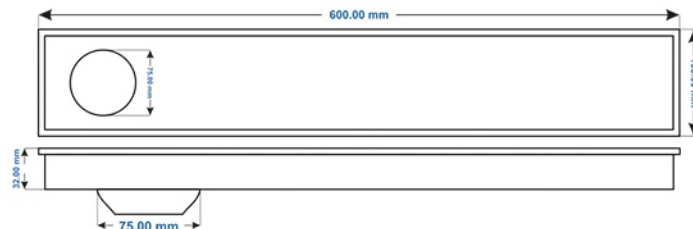
TILES / MARBLE CHANNEL DRAIN



PR-301 (TILES INSERT)

PR-302 (MARBLE INSERT)

Thickness : Base : 1.0 mm | Plate : 1.0 mm
 Outlet : 40 mm / 75 mm
 Flow Rate : 40-60 Liters / Minute
 Drainage Direction : Side / Center (can be customized)



SIZE L x W			HEIGHT (MM)	OUTLET DIA (MM)	SATTIN	PVD GOLD R GOLD	PVD BLACK	PC. BLACK
MM	CM	INCH						
75 x 300	7.5 x 30	3" x 12"	32	40	2000/-	3440/-	4867/-	2400/-
75 x 450	7.5 x 45	3" x 18"	32	40	3000/-	5160/-	7200/-	3600/-
75 x 600	7.5 x 60	3" x 24"	32	40	4000/-	6880/-	9533/-	4800/-
75 x 750	7.5 x 75	3" x 30"	32	40	5000/-	8600/-	11833/-	6000/-
75 x 800	7.5 x 80	3" x 32"	32	40	5333/-	9173/-	12600/-	6400/-
75 x 900	7.5 x 90	3" x 36"	32	40	6000/-	10320/-	14133/-	7200/-
75 x 1050	7.5 x 105	3" x 42"	32	40	7000/-	12040/-	16466/-	8400/-
75 x 1200	7.5 x 120	3" x 48"	32	40	8000/-	13760/-	18799/-	9600/-
100 x 300	10 x 30	4" x 12"	32	75	2120/-	3720/-	5420/-	2600/-
100 x 450	10 x 45	4" x 18"	32	75	3180/-	5580/-	8015/-	3900/-
100 x 600	10 x 60	4" x 24"	32	75	4240/-	7440/-	10640/-	5200/-
100 x 750	10 x 75	4" x 30"	32	75	5300/-	9300/-	13235/-	6500/-
100 x 800	10 x 80	4" x 32"	32	75	5653/-	9920/-	14085/-	6933/-
100 x 900	10 x 90	4" x 36"	32	75	6360/-	11160/-	15725/-	7800/-
100 x 1050	10 x 105	4" x 42"	32	75	7420/-	13020/-	18240/-	9100/-
100 x 1200	10 x 120	4" x 48"	32	75	8480/-	14880/-	21015/-	10400/-

Application

- » Bathrooms
- » Terrace
- » Washing Area
- » Balconies
- » Lobbies
- » Drainage Area

Available Color

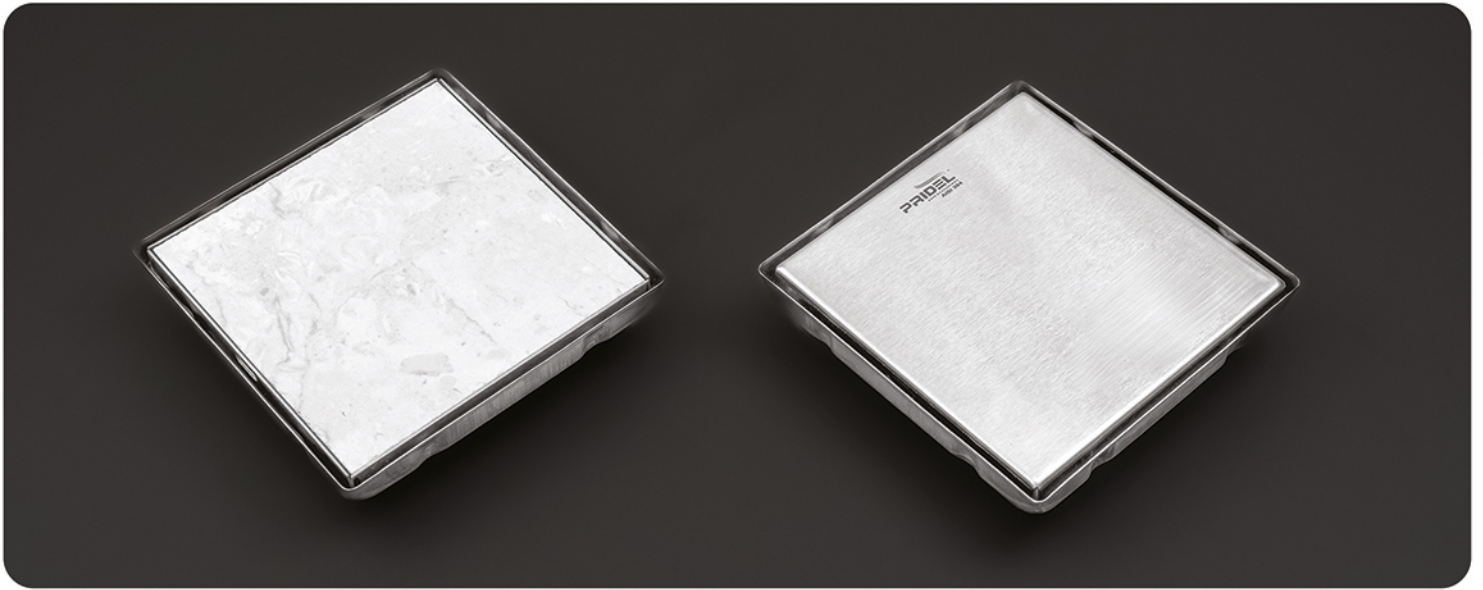


“Drain Smarter,
Live *Cleaner*.” ✦





TILES / MARBLE INSERT



PR-401 (TILES INSERT)

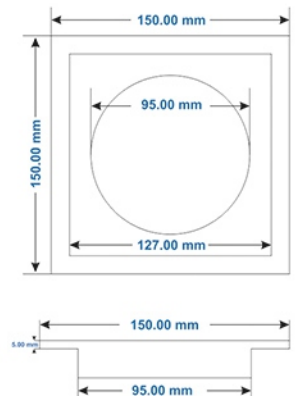
(Base : 1.0 MM, Plate : 1.5 MM)



PR-402 (MARBLE INSERT)

(Base : 1.0 MM, Plate : 1.0 MM)

SIZE L x W			HEIGHT (MM)	OUTLET DIA (MM)	SATTIN	PVD GOLD R GOLD	PVD BLACK	PC. BLACK
MM	CM	INCH						
100 x 100	10 x 10	4" x 4"	30	65	1100/-	2367/-	3067	1367/-
125 x 125	12.5 x 12.5	5" x 5"	35	75	1250/-	2883/-	3767/-	1535/-
150 x 150	15 x 15	6" x 6"	35	95	1450/-	3417/-	5300/-	1900/-

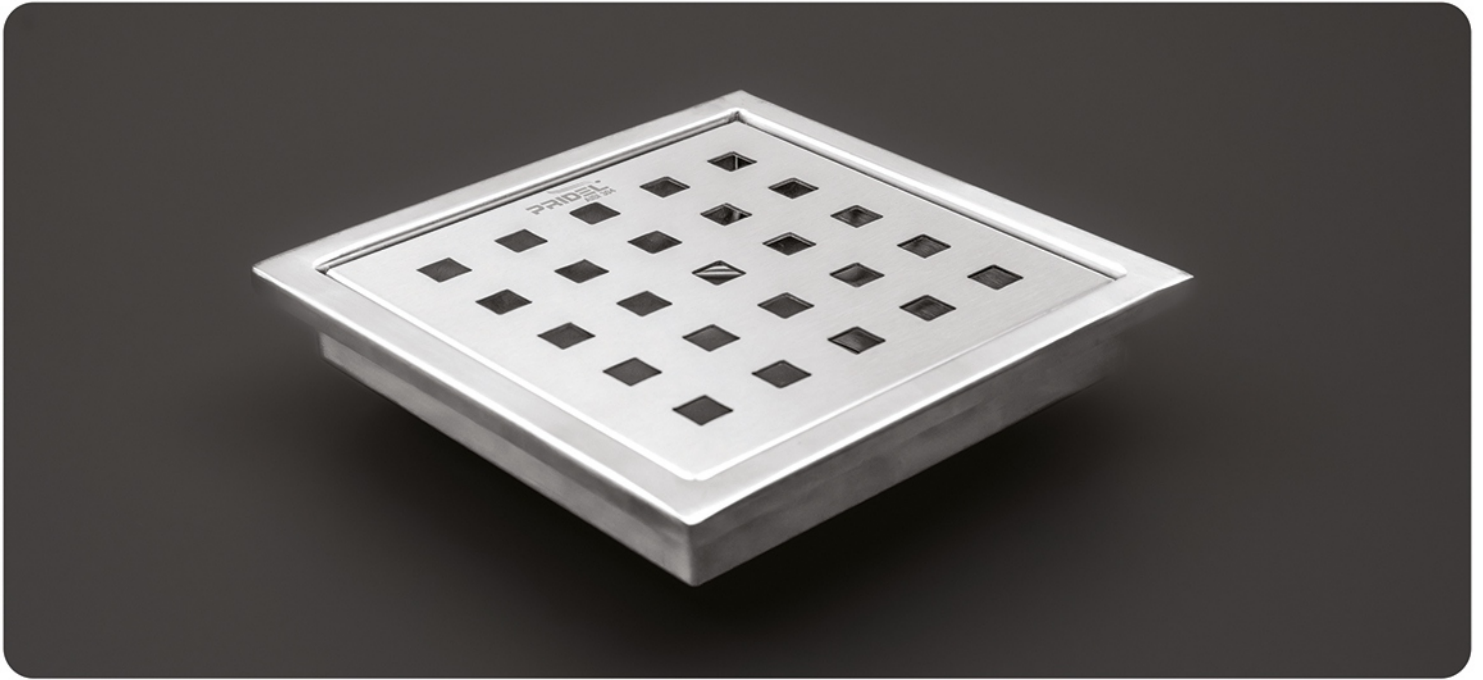


Flush with
Perfection. ✦

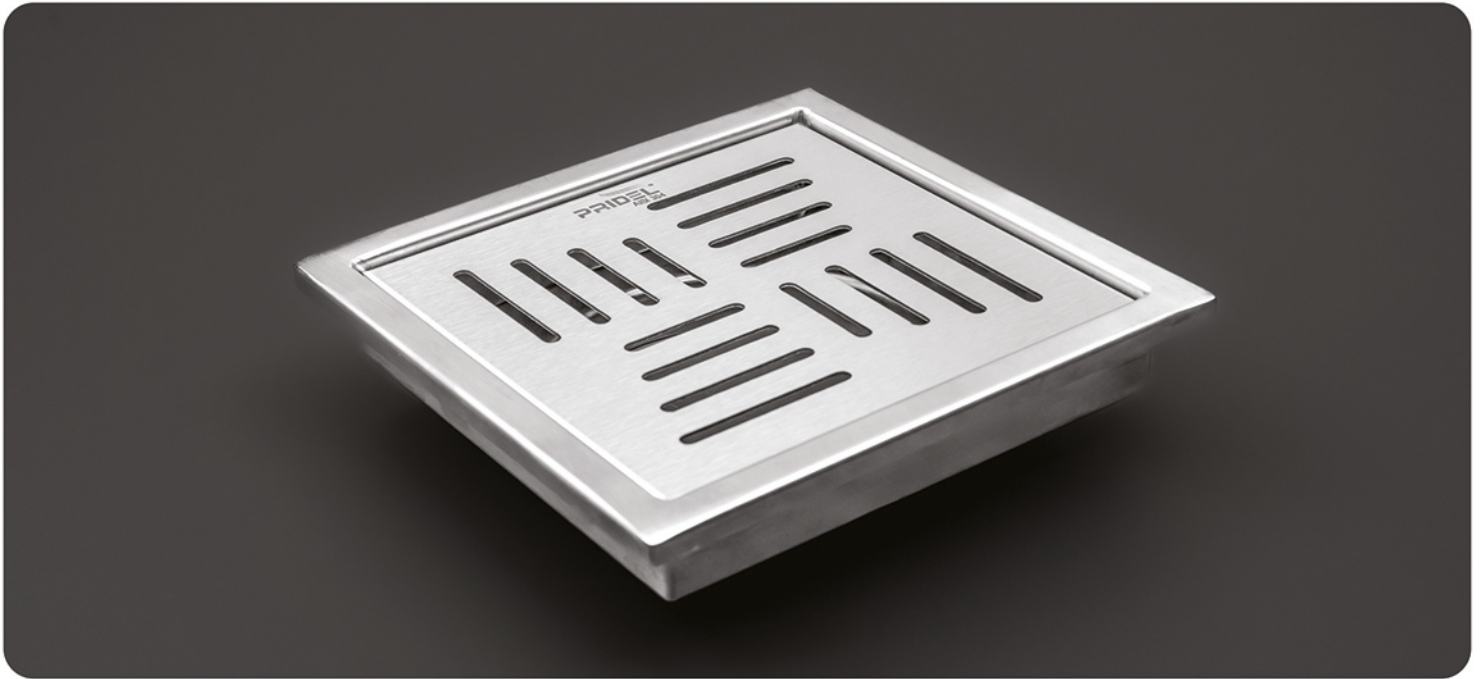




FLOOR DRAIN (WITH KOLLAR)



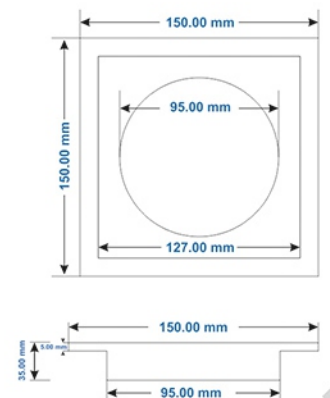
PR-501 (SQUARE)



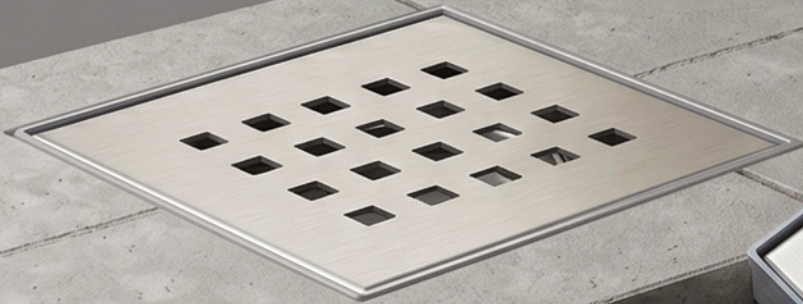
PR-502 (BASKET)

SS 304 (Base : 1.0 MM, Plate : 1.0 MM)

SIZE L x W			HEIGHT (MM)	OUTLET DIA (MM)	SATTIN	PVD GOLD R GOLD	PVD BLACK	P.C. BLACK
MM	CM	INCH						
150 x 150	15 x 15	6" x 6"	35	95	1367/-	3334/-	5167/-	1499/-
125 x 125	12.5 x 12.5	5" x 5"	35	75	1200/-	2834/-	3734/-	1817/-

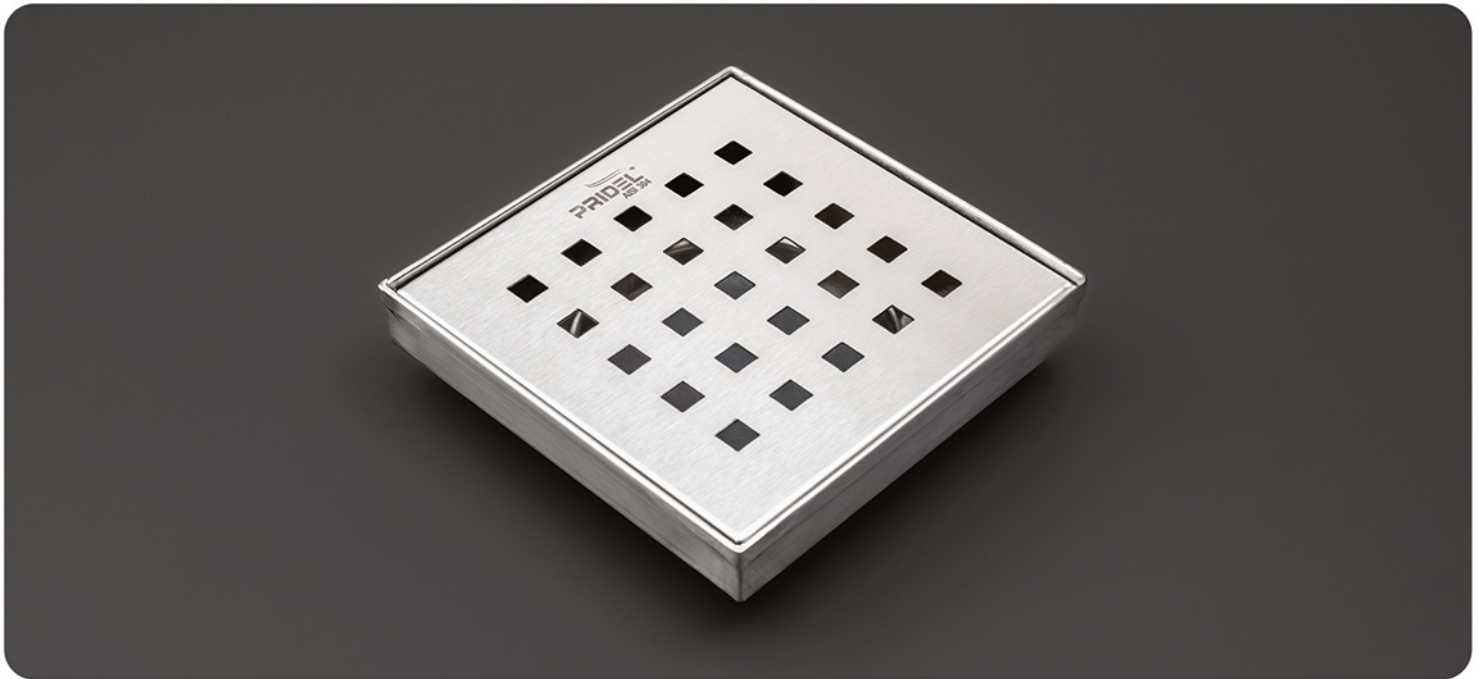


“Understated.
Unmatched.” ✦

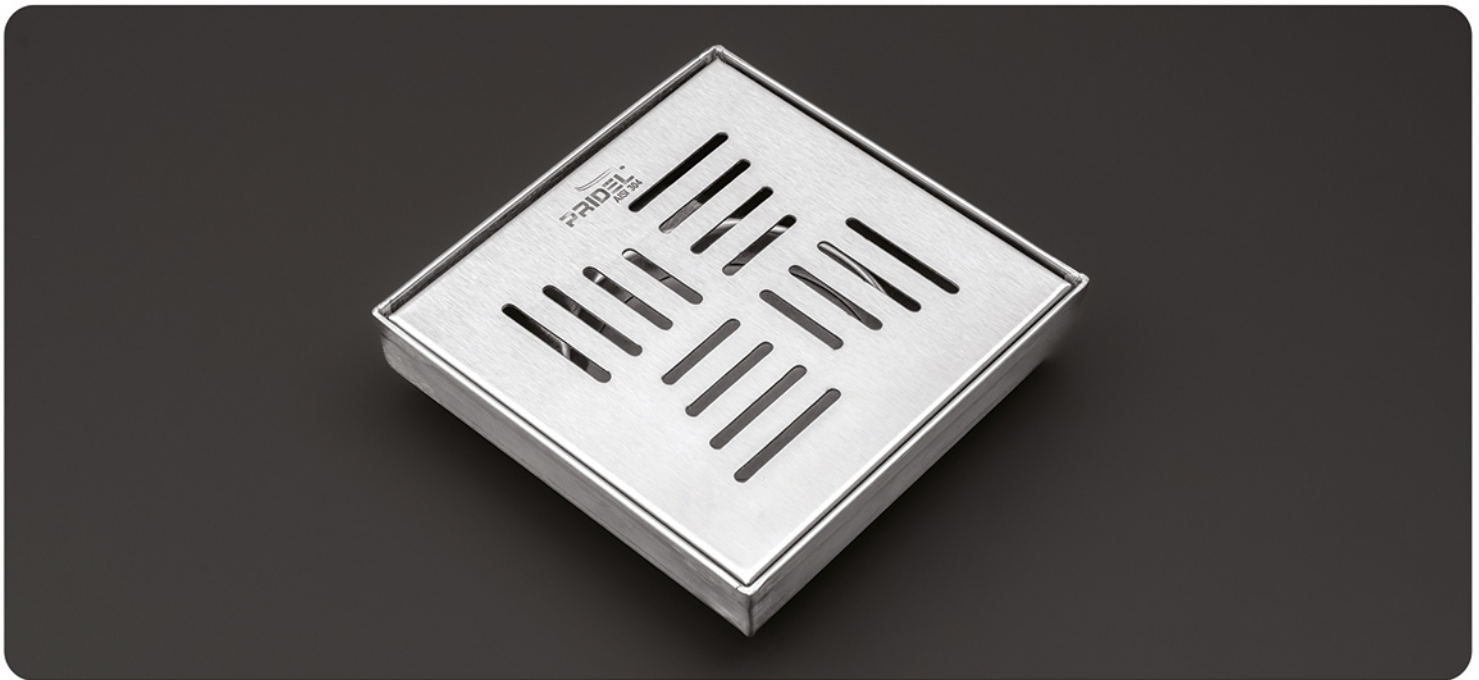




FLOOR DRAIN (W/O KOLLAR)



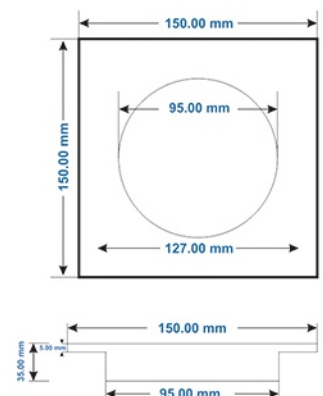
PR-601 (SQUARE)



PR-602 (BASKET)

SS 304 (Base : 1.0 MM, Plate : 1.0 MM)

SIZE L x W			HEIGHT (MM)	OUTLET DIA (MM)	SATTIN	PVD GOLD R GOLD	PVD BLACK	P.C. BLACK
MM	CM	INCH						
150 x 150	15 x 15	6" x 6"	35	95	1367/-	3334/-	5167/-	1499/-
125 x 125	12.5 x 12.5	5" x 5"	35	75	1200/-	2834/-	3734/-	1817/-





M.R.P. : PR-701 to PR-711



AUTO CLOSE BOWL



SIZE L x W			HEIGHT (MM)	OUTLET DIA (MM)	SATTIN	PVD GOLD/ R GOLD	PVD BLACK	PC. BLACK	AUTO CLOSE BOWL				DOUBLE BOWL
MM	CM	INCH							SATTIN	PVD GOLD/ R GOLD	PVD BLACK	PC. BLACK	
SS 304 (Base : 1.2 MM, Plate : 1.5 MM)													
150 x 150	15 x 15	6 x 6	35	95	585/-	1850/-	3017/-	750/-	1000/-	2967/-	4800/-	1300/-	950/-
125 x 125	12.5 x 12.5	5 x 5	35	75	417/-	1485/-	2050/-	567/-	785/-	2417/-	3317/-	985/-	-
SS 202 (Base : 1.2 MM, Plate : 1.5 MM)													
150 x 150	15 x 15	6 x 6	35	95	435/-	1700/-	2867/-	635/-	735/-	2700/-	4535/-	1035/-	735/-
125 x 125	12.5 x 12.5	5 x 5	35	75	317/-	1385/-	1950/-	467/-	685/-	2317/-	3217/-	885/-	-
SS 304 (Base : 1.0 MM, Plate : 1.5 MM)													
150 x 150	15 x 15	6 x 6	35	95	550/-	1817/-	2985/-	718/-	967/-	2935/-	4767/-	1267/-	
SS 202 (Base : 1.0 MM, Plate : 1.5 MM)													
150 x 150	15 x 15	6 x 6	35	95	400/-	1667/-	2835/-	600/-	700/-	2667/-	4500/-	1000/-	

FLOOR DRAIN



»» **PR-701** (SQUARE)
»» **PR-701/W** (Wash Basin Hole)



»» **PR-702** (PLUSE)
»» **PR-701/W** (Wash Basin Hole)



»» **PR-703** (BASKET)
»» **PR-703/W** (Wash Basin Hole)



»» **PR-704** (RIPPLE)
»» **PR-704/W** (Wash Basin Hole)



»» **PR-705** (GRID)
»» **PR-705/W** (Wash Basin Hole)

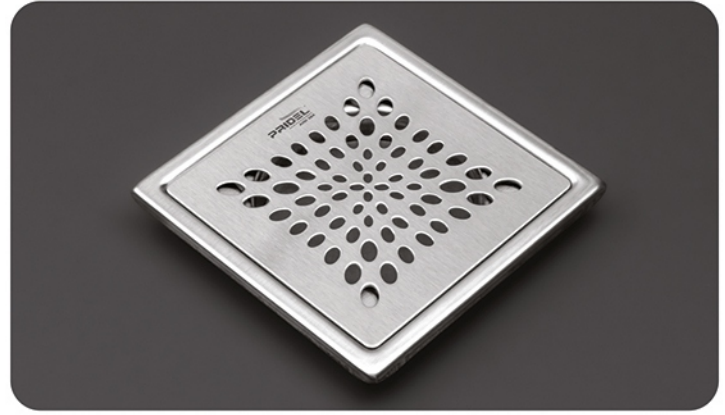


»» **PR-706** (ARROW)
»» **PR-706/W** (Wash Basin Hole)

FLOOR DRAIN



PR-707 (BUBBLE)



PR-708 (SUNBUST)



PR-709 (CAPSULE)



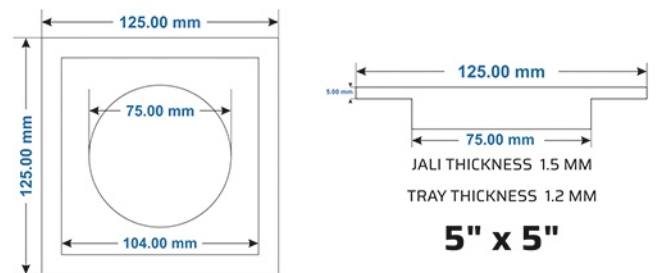
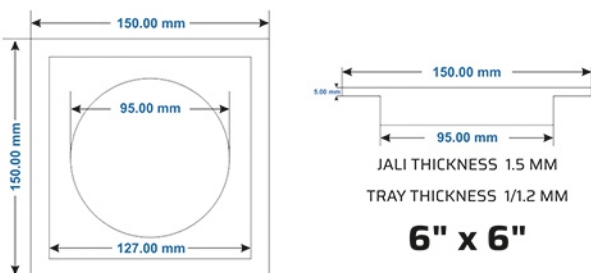
PR-710 (STEPS)

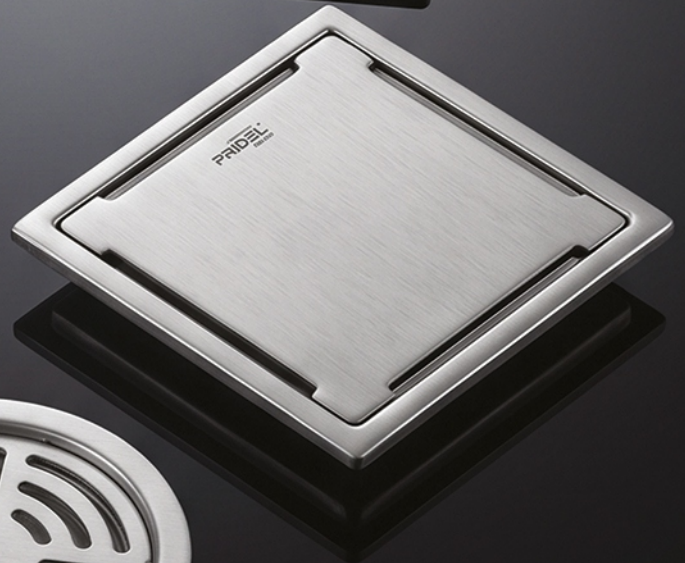
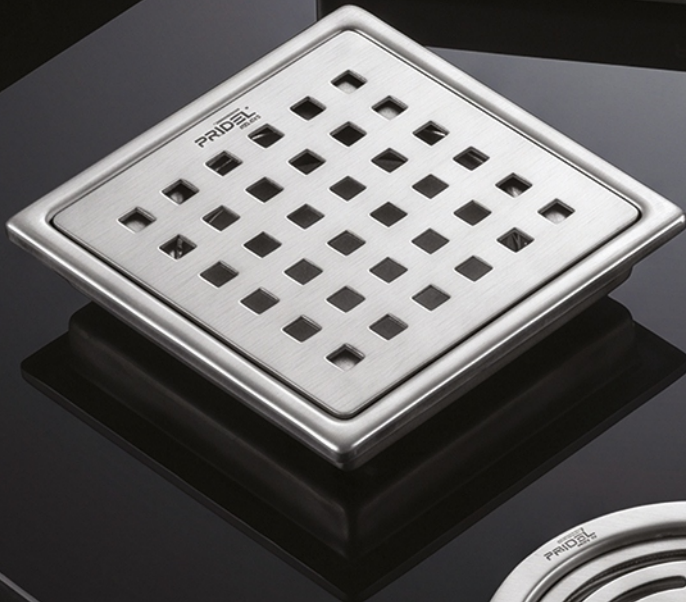


PR-711 (DIAMOND)



PR-712 (ECHO)





“Where Water Belongs.” ✦



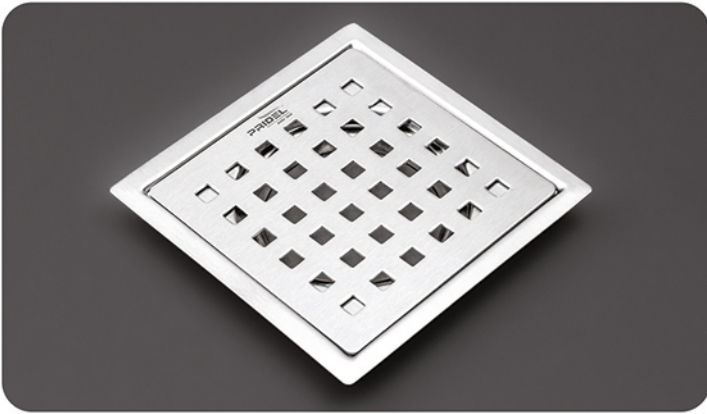
M.R.P. : PR-801 to PR-811



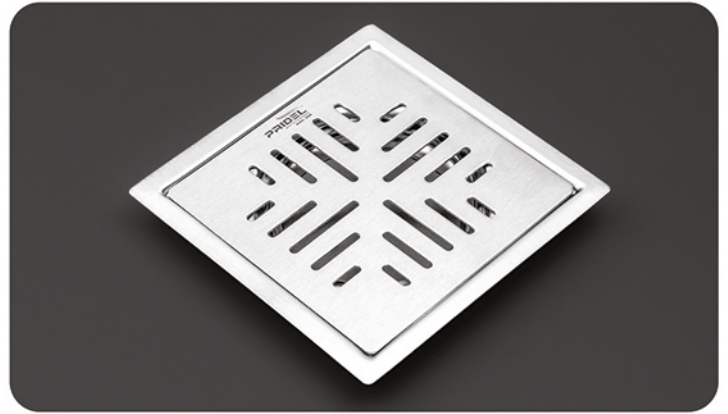
DOUBLE BOWL

SIZE L x W			HEIGHT (MM)	OUTLET DIA (MM)	SATTIN	PVD GOLD/ R GOLD	PVD BLACK	PC. BLACK	SATTIN	PVD GOLD/ R GOLD	PVD BLACK	PC. BLACK
MM	CM	INCH										
SS 304 (Base : 0.8 MM, Plate : 1.0 MM)												
150 x 150	15 x 15	6 x 6	35	80	435/-	1700/-	2867/-	600/-	800/-	2767/-	4600/-	1035/-
125 x 125	12.5 x 12.5	5 x 5	35	80	350/-	1415/-	1985/-	500/-	715/-	2385/-	3250/-	915/-
SS 202 (Base : 0.8 MM, Plate : 1.0 MM)												
150 x 150	15 x 15	6 x 6	35	80	335/-	1600/-	2767/-	500/-	635/-	2600/-	4435/-	867/-
125 x 125	12.5 x 12.5	5 x 5	35	80	267/-	1335/-	1900/-	417/-	567/-	2200/-	3100/-	767/-
SS 304 (Base : 0.8 MM, Plate : 1.5 MM)												
150 x 150	15 x 15	6 x 6	35	80	485/-	1750/-	2917/-	650/-	850/-	2817/-	4650/-	1085/-
125 x 125	12.5 x 12.5	5 x 5	35	80	385/-	1450/-	2017/-	535/-	750/-	2385/-	3285/-	950/-
SS 202 (Base : 0.8 MM, Plate : 1.5 MM)												
150 x 150	15 x 15	6 x 6	35	80	385/-	1650/-	2817/-	550/-	685/-	2650/-	4485/-	917/-
125 x 125	12.5 x 12.5	5 x 5	35	80	300/-	1367/-	1935/-	450/-	600/-	2235/-	3135/-	800/-

FLAT CUT FLOOR DRAIN



»» **PR-801** (SQUARE)
»» **PR-801/W** (Wash Basin Hole)



»» **PR-802** (PLUSE)
»» **PR-801/W** (Wash Basin Hole)



»» **PR-803** (BASKET)
»» **PR-803/W** (Wash Basin Hole)



»» **PR-804** (RIPPLE)
»» **PR-804/W** (Wash Basin Hole)



»» **PR-805** (GRID)
»» **PR-805/W** (Wash Basin Hole)



»» **PR-806** (ARROW)
»» **PR-806/W** (Wash Basin Hole)

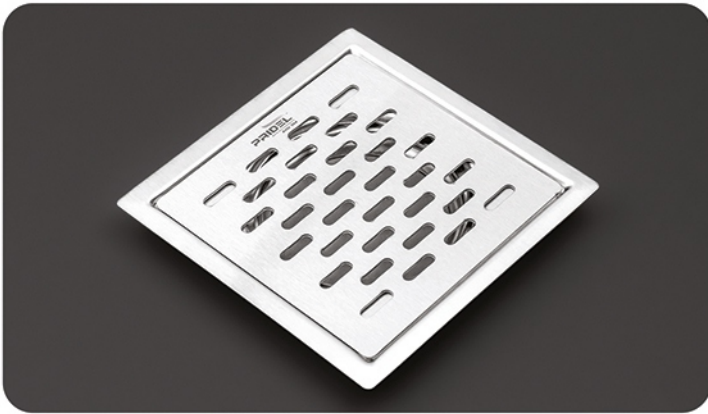
FLAT CUT FLOOR DRAIN



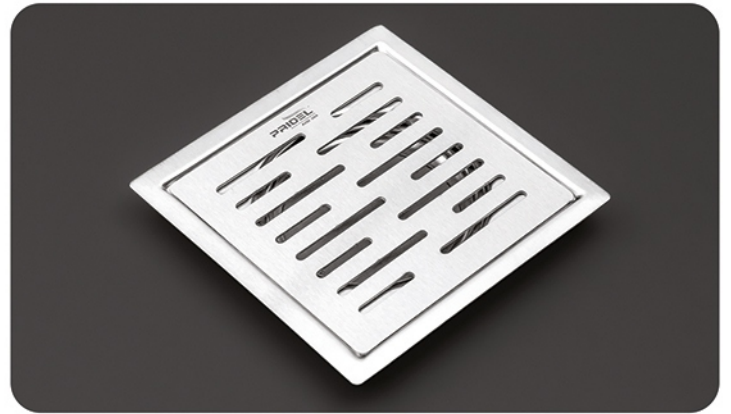
PR-807 (BUBBLE)



PR-808 (SUNBUST)



PR-809 (CAPSULE)



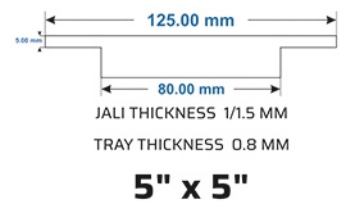
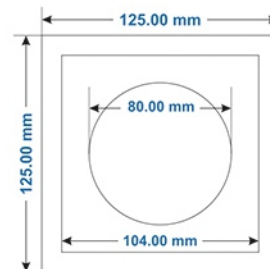
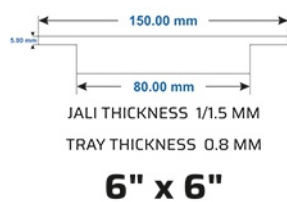
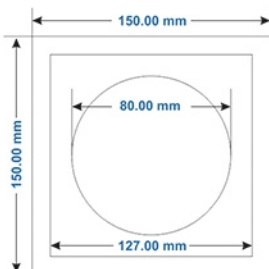
PR-810 (STEPS)



PR-811 (DIAMOND)



PR-812 (ECHO)





“That *Steel*
Speaks for Itself.”



FLAPPER FLOOR DRAIN



PR-901 (BASKET)



PR-902 (CAPSULE)



PR-903 (STEPS)



PR-904 (DIAMOND)



ANTI COCKROACH BOWL

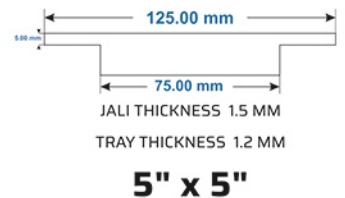
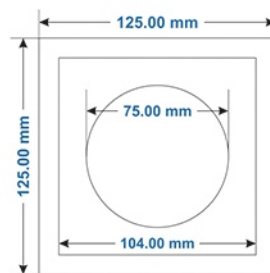
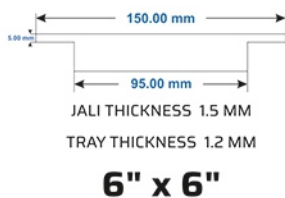
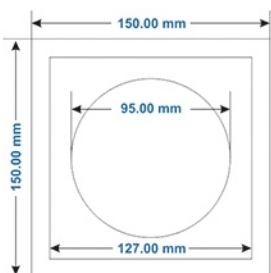
SIZE L x W			HEIGHT (MM)	OUTLET DIA (MM)	SATTIN	PVD GOLD/ R GOLD	PVD BLACK	P.C. BLACK	SATTIN	PVD GOLD/ R GOLD	PVD BLACK	P.C. BLACK
MM	CM	INCH										

SS 304 (Base : 1.2 MM, Plate : 1.5 MM)

150 x 150	15 x 15	6 x 6	35	95	735/-	2000/-	3167/-	900/-	1150/-	3117/-	4950/-	1385/-
125 x 125	12.5 x 12.5	5 x 5	35	75	567/-	1635/-	2200/-	717/-	935/-	2567/-	3467/-	1135/-

SS 202 (Base : 1.2 MM, Plate : 1.5 MM)

150 x 150	15 x 15	6 x 6	35	95	585/-	1850/-	3015/-	785/-	885/-	2850/-	4685/-	1117/-
125 x 125	12.5 x 12.5	5 x 5	35	75	467/-	1535/-	2100/-	617/-	835/-	2467/-	3367/-	1035/-





ANTI COCKROACH BOWL

SIZE L x W			HEIGHT (MM)	OUTLET DIA (MM)	SATIN	ELITE GLOSSY	PVD GOLD/ R GOLD	PVD BLACK	PC. BLACK	SATIN	ELITE GLOSSY	PVD GOLD/ R GOLD	PVD BLACK	PC. BLACK
MM	CM	INCH												

SS 304 (Base : 1.0 mm, Plate : 1.0 mm)

150 x 150	15 x 15	6 x 6	35	80	385/-	417/-	1650/-	2817/-	550/-	750/-	785/-	2717/-	4550/-	950/-
125 x 125	12.5 x 12.5	5 x 5	35	80	350/-	385/-	1417/-	1985/-	500/-	717/-	750/-	2350/-	3250/-	917/-

SS 202 (Base : 1.0 mm, Plate : 1.0 mm)

150 x 150	15 x 15	6 x 6	35	80	317/-	317/-	1585/-	2750/-	485/-	617/-	617/-	2583/-	4417/-	817/-
125 x 125	12.5 x 12.5	5 x 5	35	80	250/-	250/-	1317/-	1885/-	400/-	550/-	550/-	2183/-	3083/-	750/-

SS 304 (Base : 0.8 mm, Plate : 1.0 mm - SIDE BIDDING)

150 x 150	15 x 15	6 x 6	35	80	360/-	393/-	1627/-	2794/-	527/-	727/-	760/-	2695/-	2527/-	927/-
125 x 125	12.5 x 12.5	5 x 5	35	80	323/-	357/-	1390/-	1957/-	323/-	690/-	725/-	2325/-	3225/-	890/-

SS 202 (Base : 0.8 mm, Plate : 1.0 mm - SIDE BIDDING)

150 x 150	15 x 15	6 x 6	35	80	293/-	293/-	1560/-	2727/-	460/-	595/-	595/-	2560/-	4393/-	795/-
125 x 125	12.5 x 12.5	5 x 5	35	80	235/-	235/-	1300/-	1867/-	385/-	535/-	535/-	2167/-	3067/-	735/-

SQUARE LOCKING DRAIN



»» **PR-1001** (FLAT LOCKING)



»» **PR-1002** (FLAT LOCKING)



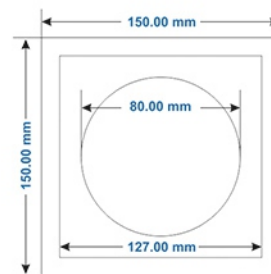
»» **PR-1004** (LINE)



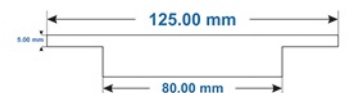
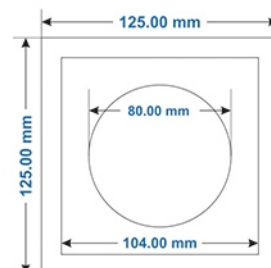
»» **PR-1004** (SIDE BIDDING)



»» **PR-1005** (SIDE BIDDING)



6" x 6"



5" x 5"

ROUND LOCKING DRAIN



PR-1101 (CIRCLE)



PR-1102 (PLUS)



ANTI COCKROACH BOWL

SIZE L x W			HEIGHT (MM)	OUTLET DIA (MM)	SATIN	ELITE GLOSSY	PVD GOLD/ R GOLD	PVD BLACK	P.C. BLACK	ANTI COCKROACH BOWL				
MM	CM	INCH								SATIN	ELITE GLOSSY	PVD GOLD/ R GOLD	PVD BLACK	P.C. BLACK
SS 304 (Base : 1.0 mm, Plate : 1.0 mm)														
125 x 125	12.5 x 12.5	5 x 5	35	80	350/-	385/-	1417/-	1985/-	500/-	717/-	750/-	2350/-	3250/-	917/-
SS 202 (Base : 1.0 mm, Plate : 1.0 mm)														
125 x 125	12.5 x 12.5	5 x 5	35	80	250/-	250/-	1317/-	1885/-	400/-	550/-	550/-	2183/-	3083/-	750/-
SS 304 (Base : 0.8 mm, Plate : 1.0 mm)														
125 x 125	12.5 x 12.5	5 x 5	35	80	323/-	357/-	1390/-	1957/-	323/-	690/-	725/-	2325/-	3225/-	890/-
SS 202 (Base : 0.8 mm, Plate : 1.0 mm)														
125 x 125	12.5 x 12.5	5 x 5	35	80	235/-	235/-	1300/-	1867/-	385/-	535/-	535/-	2167/-	3067/-	735/-

THUMB / BRICKS / CLEAN OUT



»» **PR-1201** (THUMB)

PR 1201 (Thumb Type 1.5 mm)

SIZE L x W			HEIGHT (MM)	OUTLET DIA (MM)	M.R.P.
MM	CM	INCH			
150 x 150	15 x 15	6 x 6	35	78	950/-



»» **PR-1202** (BRICKS)

PR 1202 (2-Pcs. Grating 1.5 mm)

SIZE L x W			HEIGHT (MM)	OUTLET DIA (MM)	M.R.P.
MM	CM	INCH			
150 x 150	15 x 15	6 x 6	35	95	750/-
100 x 100	10 x 10	4 x 4	30	65	505/-



»» **PR-1203** (CLEAN OUT)

PR 1203 (2-Pcs. Grating 1.5 mm)

SIZE L x W			HEIGHT (MM)	OUTLET DIA (MM)	M.R.P.
MM	CM	INCH			
150 x 150	15 x 15	6 x 6	35	95	815/-
100 x 100	10 x 10	4 x 4	30	65	535/-

FIX DRAIN



PR-1301 (CIRCLE 0.8 mm)

PR-1301/W (CIRCLE 0.8 mm)



PR-1302 (CIRCLE 0.6 mm)

PR-1302/W (CIRCLE 0.6 mm)



PR-1303 (PLUS 0.6 mm)

PR-1303/W (PLUS 0.6 mm)

SS 304 (Thickness : 0.6 mm)

SIZE L x W			M.R.P. SATIN	M.R.P. ELITE GLOSSY
MM	CM	INCH		
150 x 150	15 x 15	6 x 6	200/-	217/-

SS 202 (Thickness : 0.6 mm)

150 x 150	15 x 15	6 x 6	160/-	160/-
-----------	---------	-------	-------	-------

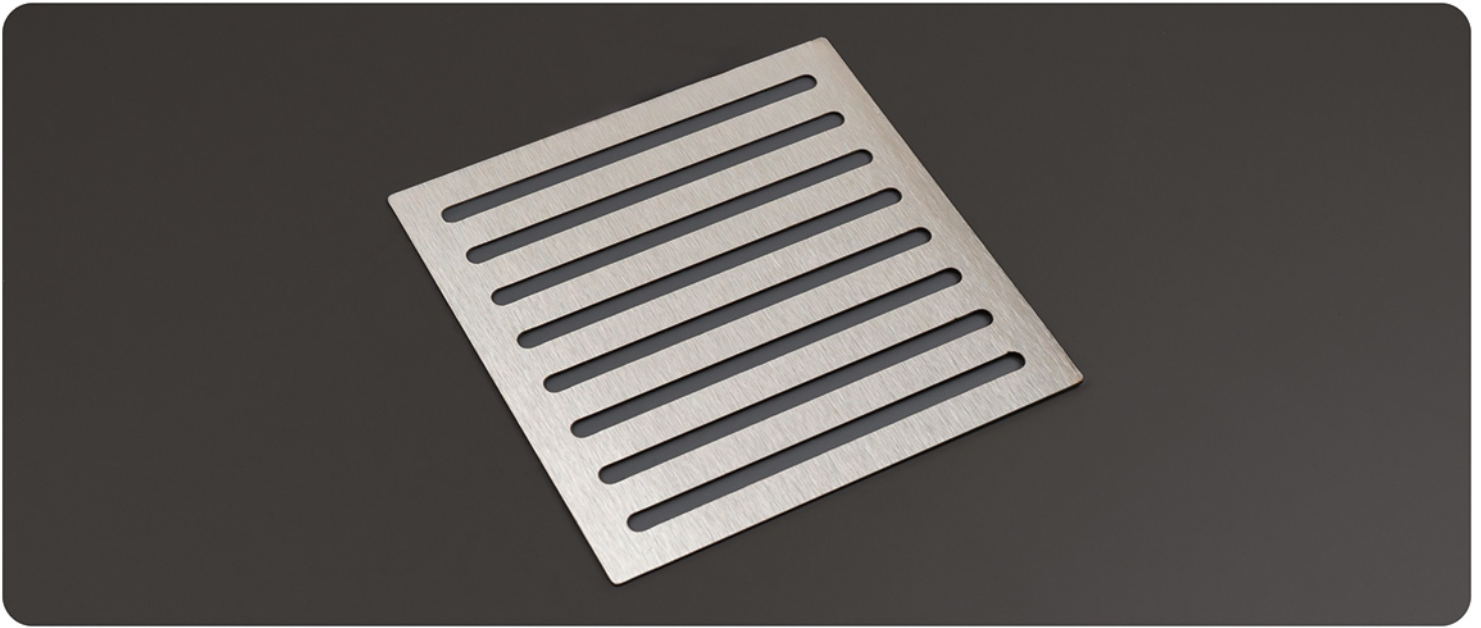
SS 304 (Thickness : 0.8 mm)

SIZE L x W			M.R.P. SATIN	M.R.P. ELITE GLOSSY
MM	CM	INCH		
150 x 150	15 x 15	6 x 6	235/-	267/-

SS 202 (Thickness : 0.8 mm)

150 x 150	15 x 15	6 x 6	185/-	185/-
-----------	---------	-------	-------	-------

VERTICAL DRAIN



»» **PR-1401** (SQUARE)



»» **PR-1402** (CIRCLE)

SIZE L x W			Thickness (MM)	M.R.P. SATIN (202)	M.R.P. SATIN (304)
MM	CM	INCH			
75 x 75	7.5 x 7.5	3 x 3	1.5	110/-	135/-
100 x 100	10 x 10	4 x 4	1.5	145/-	185/-
125 x 125	12.5 x 12.5	5 x 5	1.5	195/-	250/-
150 x 150	15 x 15	6 x 6	1.5	250/-	335/-
200 x 200	20 x 20	8 x 8	1.5	385/-	527/-
250 x 250	25 x 25	10 x 10	1.5	585/-	827/-
300 x 300	30 x 30	12 x 12	1.5	800/-	1135/-

TRIANGLE DRAIN



▶▶ **PR-1501** (TILE INSERT)



▶▶ **PR-1502** (SQUARE)



▶▶ **PR-1503** (CAPSULE)

SS 304 (Base : 1.0 mm, Plate : 1.0 mm)

SIZE L x W			OUT LET (MM)	M.R.P. SATIN
MM	CM	INCH		
200 x 200	20 x 20	8 x 8	75	2000/-
250 x 250	25 x 25	10 x 10	75	2335/-
300 x 300	30 x 30	12 x 12	75	3067/-



POP UP DRAIN



PR-1601 (POP UP)

SS 304 (Base : 1.0 mm, Plate : 1.0 mm)

SIZE L x W			OUT LET (MM)	M.R.P SATIN
MM	CM	INCH		
127 x 127	12.7 x 12.7	5 x 5	100	835/-
150 x 150	15.0 x 15.0	6 x 6	100	1000/-

COCKROACH BOWL



PR-1701 (AUTO CLOSE)

SS 304 (AUTO CLOSE ANTI COCKROACH BOWL)

CODE	SIZE L x W			HEIGHT (MM)	OUT LET (MM)	M.R.P. SATIN	PVD GOLD/ R GOLD	PVD BLACK	PCP BLACK
	MM	CM	INCH						
1701	150 x 150	15 x 15	6 x 6	35	100	417/-	1117/-	1785/-	485/-
1701	125 x 125	12.5 x 12.5	5 x 5	35	78	350/-	935/-	1267/-	420/-
1701	100 x 100	10 x 10	4 x 4	35	65	317/-	917/-	1250/-	405/-



PR-1702 (DOUBLE BOWL)

SS 304 (DOUBLE BOWL ANTI COCKROACH BOWL)

CODE	SIZE L x W			HEIGHT (MM)	OUT LET (MM)	M.R.P. SATIN/ GLOSSY	PVD GOLD/ R GOLD	PVD BLACK	PCP BLACK
	MM	CM	INCH						
1702	150 x 150	15 x 15	6 x 6	35	100	367/-	1067/-	1735/-	450/-

SS 202 (DOUBLE BOWL ANTI COCKROACH BOWL)

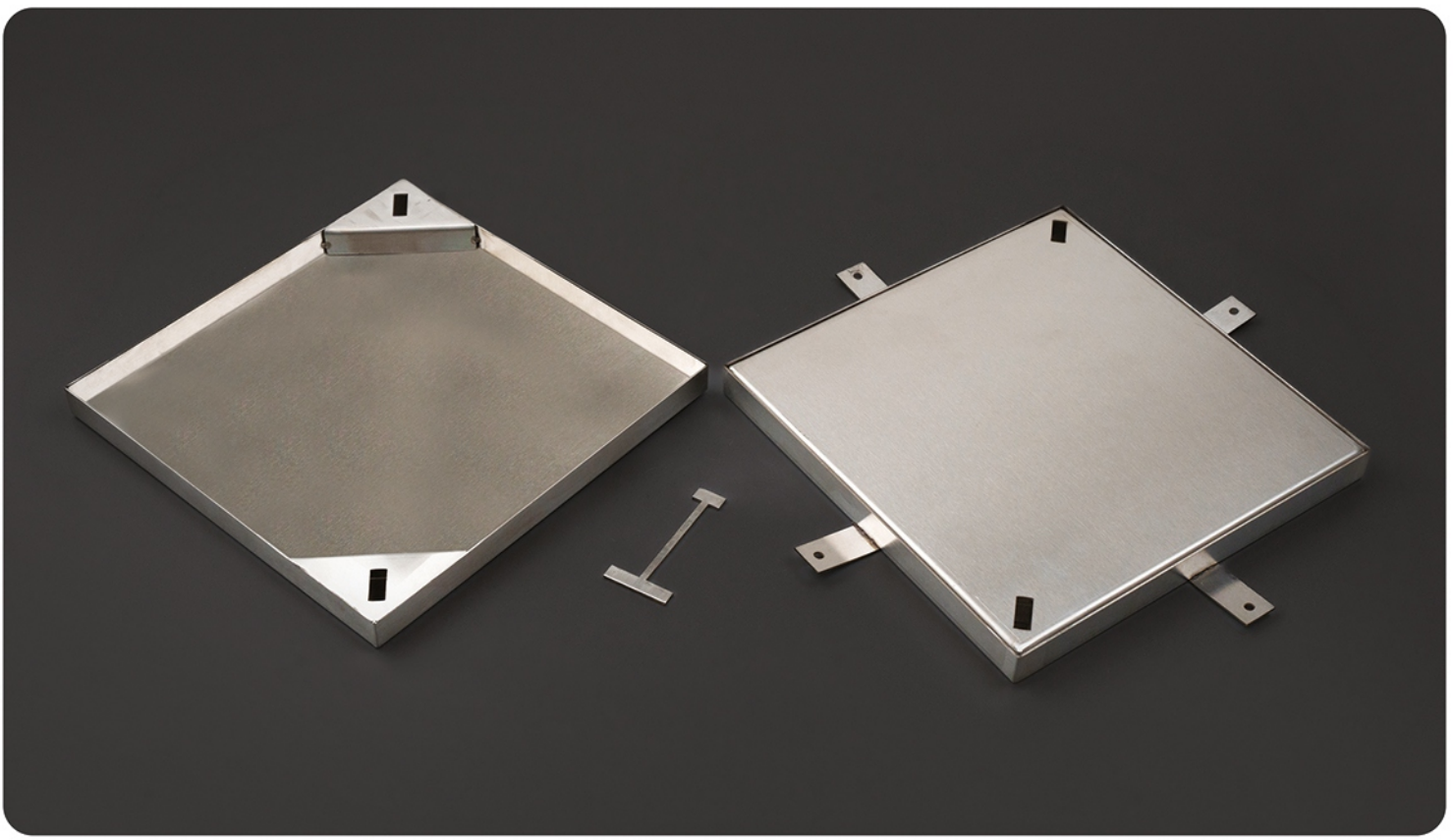
1702	150 x 150	15 x 15	6 x 6	35	100	300/-	1000/-	1667/-	385/-
------	-----------	---------	-------	----	-----	-------	--------	--------	-------



PR-1703 (PVC)



MANHOLE COVER



PR-1801 (MANHOLE COVER)

SS 304 Base : 1.5 mm, Plate : 1.5 mm

SIZE L x W			M.R.P. SATIN
MM	CM	INCH	
300 x 300	30 x 30	12 x 12	6500/-
450 x 450	45 x 45	18 x 18	11165/-
600 x 600	60 x 60	24 x 24	16499/-

RACK BOLT / WEST COUPLING



PR-1901 (WASH BASIN BOLT)

CODE	SIZE (MM)	MRP
1901 (SS)	10 x 120	120/-

CODE	SIZE (MM)	MRP
1901 (MS)	10 x 120	75/-



PR-1902 (RACK BOLT)

CODE	SIZE (MM)	MRP
1902 (SS)	16 x 165	450/-

CODE	SIZE (MM)	MRP
1902 (SS)	16 x 225	550/-



PR-1903 (KOHLAR BOLT)

CODE	SIZE (MM)	MRP
1903 (SS)	16 x 160	635/-



PR-1904 (URINAL BRACKET)

CODE	MRP
1904 (SS)	185/-



PR-1905 (RUBBER KIT)

CODE	MRP
1805	84/-



PR-1906 (CIRCLE)

INCH	SIZE (MM)	MRP (CP) SS 202
3"	75	217/-
4"	100	235/-
5"	125	250/-

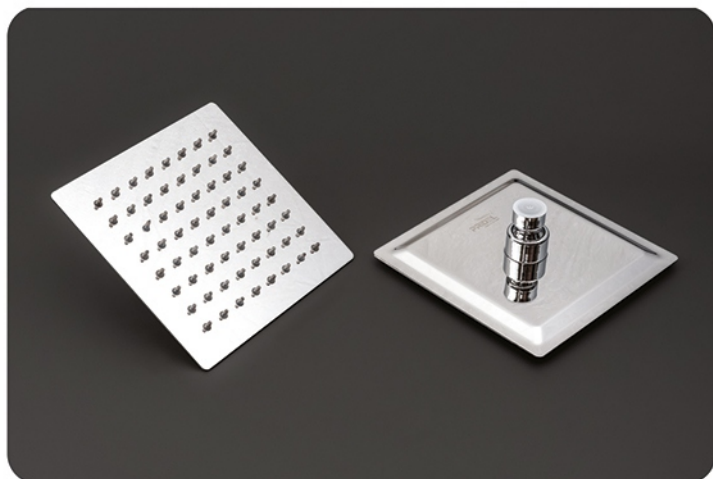


PR-1907 (CAPSULE)



Ultra Slim

SHOWER



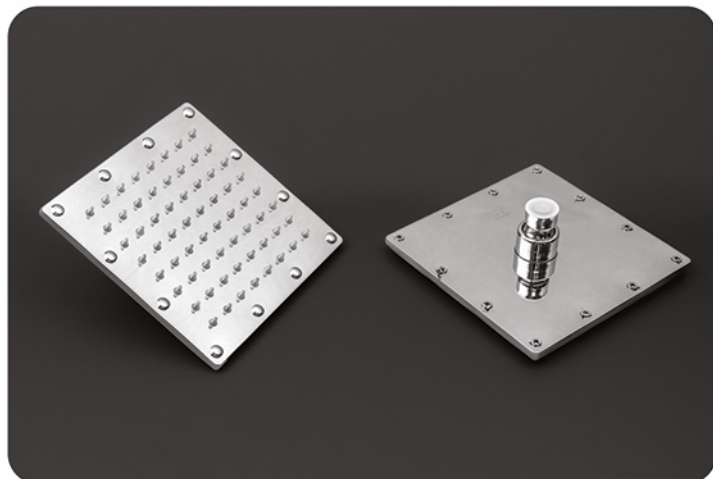
PR-2001 (ULTRA SLIM SHOWER)

SS 304

SIZE (INCH)	4 x 4	6 x 6	8 x 8	10 x 10	12 x 12	16 x 16
MRP CP	500/-	817/-	1300/-	1850/-	2240/-	7100/-

SS 202

SIZE (INCH)	4 x 4	6 x 6	8 x 8	10 x 10	12 x 12	16 x 16
MRP CP	350/-	540/-	850/-	1240/-	1560/-	5317/-



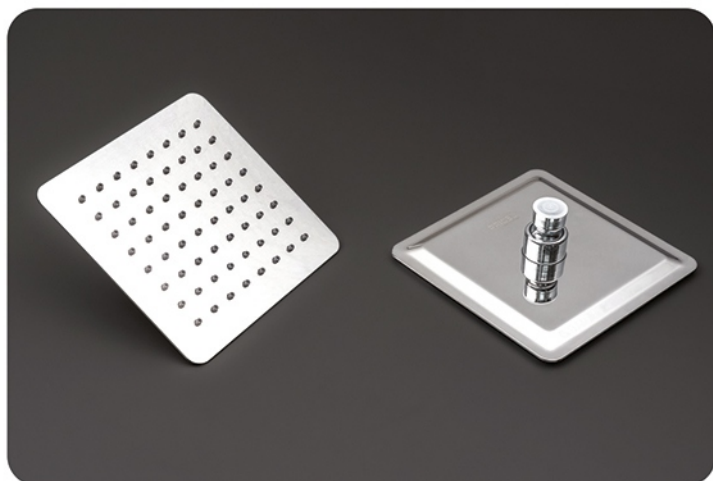
PR-2002 (SANDWICH SHOWER)

SS 304

SIZE (INCH)	4 x 4	6 x 6	8 x 8	10 x 10	12 x 12
MRP CP	627/-	975/-	1435/-	2067/-	2720/-

SS 202

SIZE (INCH)	4 x 4	6 x 6	8 x 8	10 x 10	12 x 12
MRP CP	475/-	787/-	1017/-	1527/-	1900/-



PR-2003 (KOLHER SHOWER)

SS 304

SIZE (INCH)	4 x 4	6 x 6	8 x 8	10 x 10	12 x 12
MRP CP	557/-	907/-	1485/-	2140/-	2755/-

SS 202

SIZE (INCH)	4 x 4	6 x 6	8 x 8	10 x 10	12 x 12
MRP CP	420/-	685/-	1115/-	1600/-	2040/-



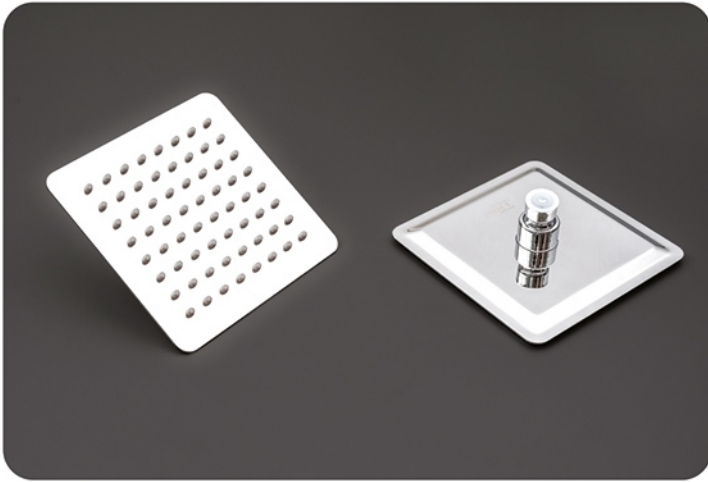
PR-2004 (THIN MAZE)

SS 304

SIZE (INCH)	4 x 4	6 x 6	8 x 8	10 x 10	12 x 12
MRP CP	557/-	907/-	1485/-	2140/-	2755/-

SS 202

SIZE (INCH)	4 x 4	6 x 6	8 x 8	10 x 10	12 x 12
MRP CP	420/-	685/-	1115/-	1600/-	2040/-



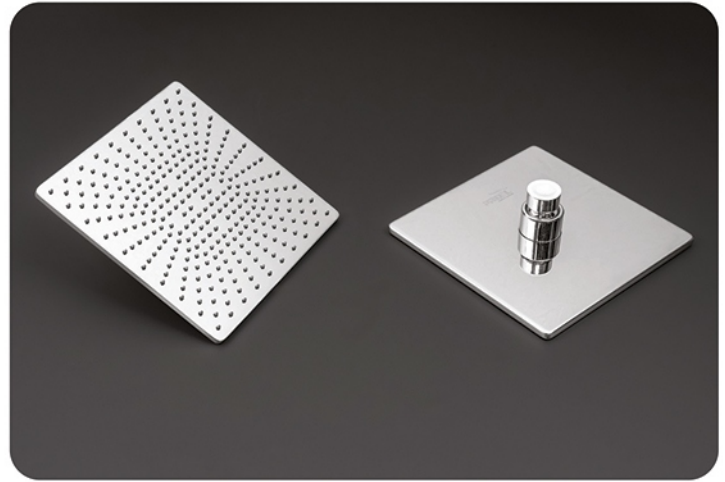
PR-2005 (MIST FLOW)

SS 304

SIZE (INCH)	4 x 4	6 x 6	8 x 8	10 x 10	12 x 12
MRP CP	785/-	1200/-	1790/-	2467/-	3370/-

SS 202

SIZE (INCH)	4 x 4	6 x 6	8 x 8	10 x 10	12 x 12
MRP CP	520/-	810/-	1257/-	1923/-	2550/-



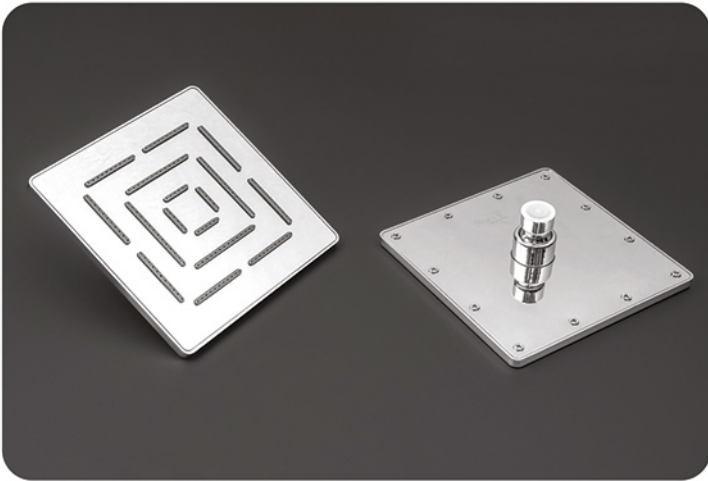
PR-2006 (SOFT SHOWER)

SS 304

SIZE (INCH)	4 x 4	6 x 6	8 x 8	12 x 12
MRP CP	880/-	1400/-	1950/-	4470/-

SS 202

SIZE (INCH)	4 x 4	6 x 6	8 x 8	12 x 12
MRP CP	635/-	1000/-	1417/-	3180/-



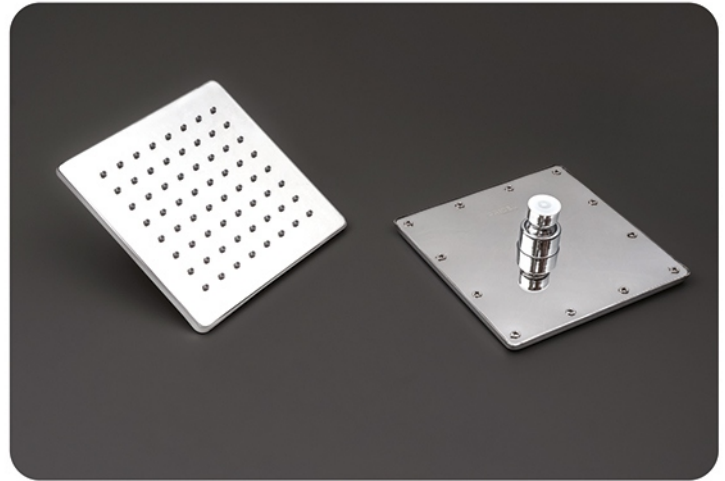
PR-2007 (MAZE SHOWER)

SS 304

SIZE (INCH)	4 x 4	6 x 6	8 x 8	12 x 12
MRP CP	905/-	1392/-	2045/-	3976/-

SS 202

SIZE (INCH)	4 x 4	6 x 6	8 x 8	12 x 12
MRP CP	655/-	1227/-	1530/-	3130/-



PR-2008 (ELEGANCE SHOWER)

SS 304

SIZE (INCH)	4 x 4	6 x 6	8 x 8	12 x 12
MRP CP	850/-	1333/-	1933/-	3860/-
PVD GOLD/ R GOLD	1700/-	3200/-	5050/-	10820/-
PVD BLACK	2170/-	4000/-	7985/-	14620/-

SS 202

SIZE (INCH)	4 x 4	6 x 6	8 x 8	12 x 12
MRP CP	580/-	950/-	1400/-	3035/-
PVD GOLD/ R GOLD	1435/-	2810/-	4510/-	9990/-
PVD BLACK	1900/-	3610/-	7450/-	13790/-



PR-2009 (ROUND ULTRA SLIM)

SS 304

SIZE (INCH)	4 x 4	6 x 6	8 x 8
MRP CP	500/-	817/-	1300/-

SS 202

SIZE (INCH)	4 x 4	6 x 6	8 x 8
MRP CP	350/-	540/-	850/-



PR-2010 (ROUND SANDWICH)

SS 304

SIZE (INCH)	4 x 4	6 x 6	8 x 8
MRP CP	627/-	975/-	1435/-

SS 202

SIZE (INCH)	4 x 4	6 x 6	8 x 8
MRP CP	475/-	787/-	1017/-



PR-2003 (MIST FLOW)

SS 304

SIZE (INCH)	4 x 4	6 x 6	8 x 8
MRP CP	785/-	1200/-	1790/-

SS 202

SIZE (INCH)	4 x 4	6 x 6	8 x 8
MRP CP	520/-	810/-	1257/-



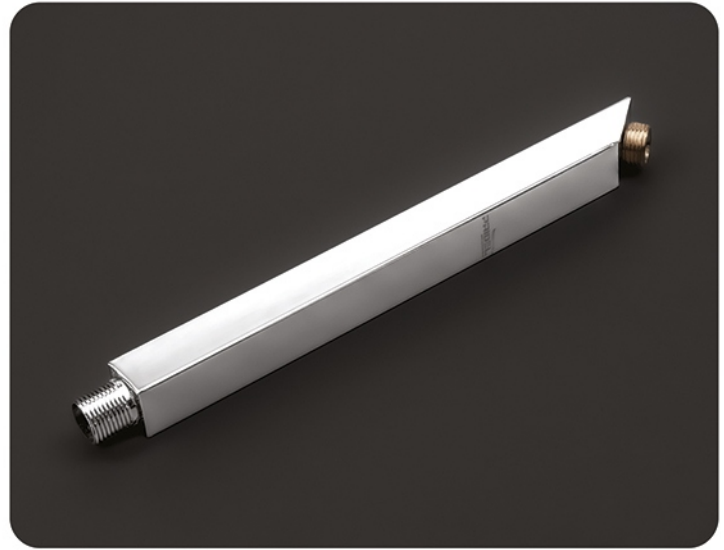
PR-2004 (KOLHER SHOWER)

SS 304

SIZE (INCH)	4 x 4	6 x 6	8 x 8
MRP CP	557/-	907/-	1485/-

SS 202

SIZE (INCH)	4 x 4	6 x 6	8 x 8
MRP CP	420/-	685/-	1115/-



PR-2101 (SQUARE)

PR-2102 (SQUARE CROSS)

SS 202					
SIZE (INCH)	9"	12"	15"	18"	24"
MRP CP	255/-	340/-	400/-	480/-	640/-
PVD GOLD/ R GOLD	555/-	740/-	900/-	1080/-	1440/-
PVD BLACK	675/-	900/-	1100/-	1320/-	1760/-

SS 202					
SIZE (INCH)	9"	12"	15"	18"	24"
MRP CP	255/-	340/-	400/-	480/-	640/-
PVD GOLD/ R GOLD	555/-	740/-	900/-	1080/-	1440/-
PVD BLACK	675/-	900/-	1100/-	1320/-	1760/-



PR-2103 (RECTANGLE)

PR-2104 (OVAL)

SS 202					
SIZE (INCH)	9"	12"	15"	18"	24"
MRP CP	255/-	340/-	400/-	480/-	640/-
PVD GOLD/ R GOLD	555/-	740/-	900/-	1080/-	1440/-
PVD BLACK	675/-	900/-	1100/-	1320/-	1760/-

SS 202					
SIZE (INCH)	9"	12"	15"	18"	24"
MRP CP	255/-	340/-	400/-	480/-	640/-
PVD GOLD/ R GOLD	555/-	740/-	900/-	1080/-	1440/-
PVD BLACK	675/-	900/-	1100/-	1320/-	1760/-

SHOWER ARM



»» **PR-2105** (ROUND CROSS)

SS 202

SIZE (INCH)	9"	12"	15"	18"	24"
MRP CP	255/-	340/-	400/-	480/-	640/-
PVD GOLD/ R GOLD	555/-	740/-	900/-	1080/-	1440/-
PVD BLACK	675/-	900/-	1100/-	1320/-	1760/-



»» **PR-2106** (ROUND L BAND)

SS 202

SIZE (INCH)	12"	15"	18"	24"
MRP CP	260/-	325/-	390/-	520/-



»» **PR-2107** (ROUND HALF BAND)

SS 202

SIZE (INCH)	7"	9"	12"	15"	18"	24"
MRP CP	152/-	195/-	260/-	325/-	390/-	520/-



»» **PR-2108** (KALAM)

SS 202

SIZE (INCH)	7"	9"	12"	15"	18"	24"
MRP CP	152/-	195/-	260/-	325/-	390/-	520/-

Bath Accessories Content

index



OCEAN



ELISTA



ANGEL



CRYSTAL



RUBY



LIVA



SQUARE



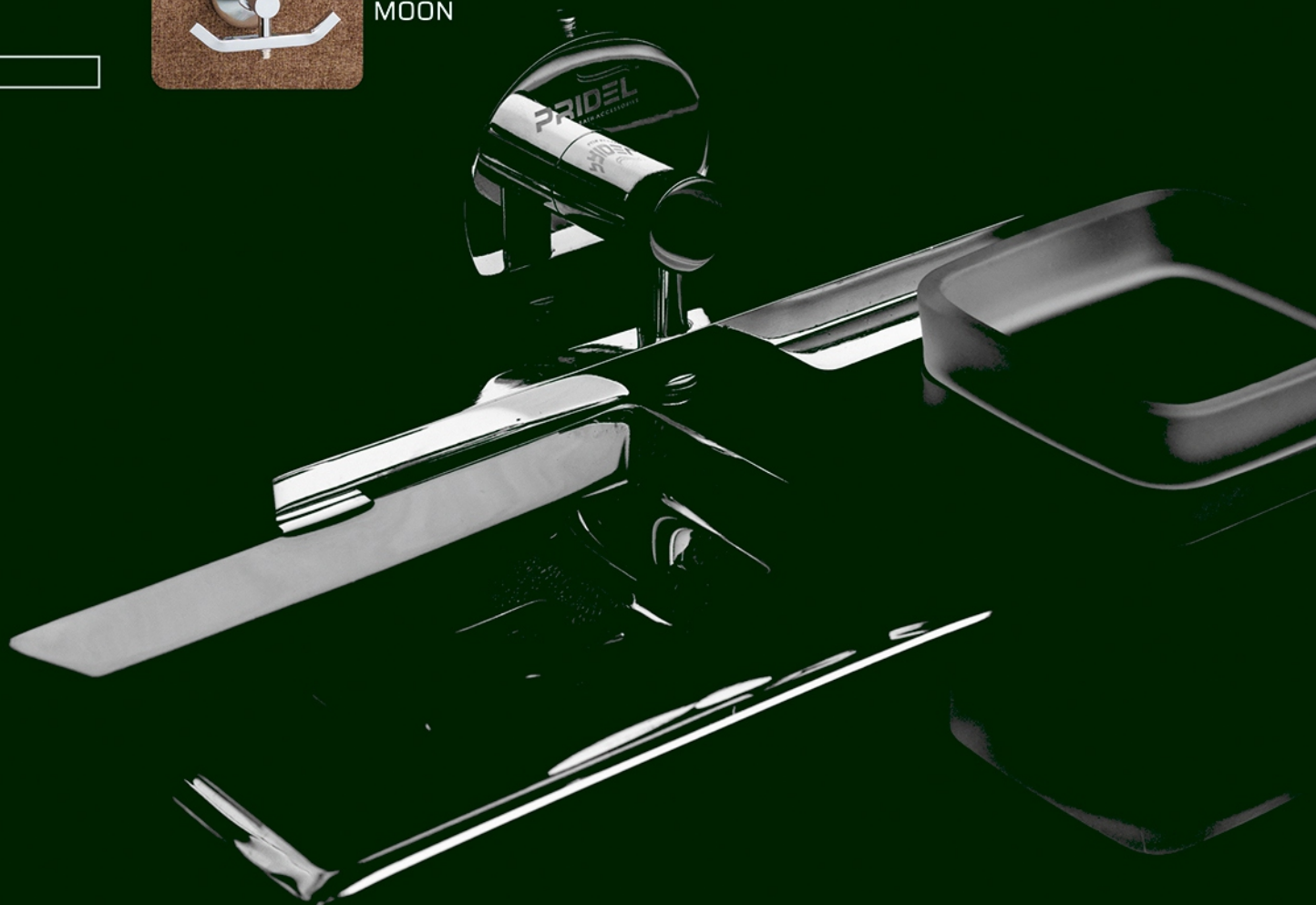
ROYAL



STAR



MOON

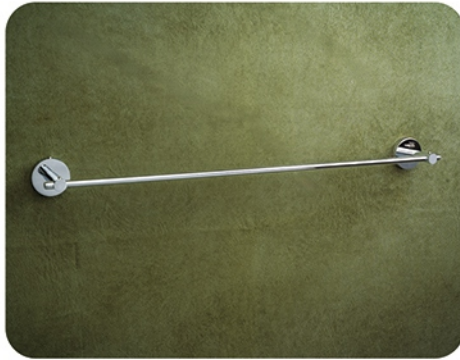




»» **O-101**

Tower Rack

SIZE (INCH)	18"	24"
MRP CP	2705/-	2920/-



»» **O-102**

Tower Rod

SIZE (INCH)	18"	24"
MRP CP	1130/-	1177/-



»» **O-103**

Soap Dish

MRP CP	700/-
--------	-------



»» **O-104**

Double Soap Dish

MRP CP	1250/-
--------	--------



»» **O-105**

Soap Dish with Tumbler Holder

MRP CP	1400/-
--------	--------



»» **O-106**

Tumbler Holder

MRP CP	867/-
--------	-------



»» **O-107**

Liquid Soap Dispenser

MRP CP	1130/-
--------	--------



»» **O-108**

Napkin Ring

MRP CP	768/-
--------	-------



»» **O-109**

Robe Hook

MRP CP	610/-
--------	-------



»» **O-110**

Paper Holder

MRP CP	1200/-
--------	--------



E-201

Tower Rack

SIZE (INCH)	18"	24"
MRP CP	3870/-	4100/-



E-202

Tower Rod

SIZE (INCH)	18"	24"
MRP CP	1785/-	1927/-



E-203

Soap Dish

MRP CP	833/-
--------	-------



E-204

Double Soap Dish

MRP CP	1405/-
--------	--------



E-205

Soap Dish with Tumbler Holder

MRP CP	1577/-
--------	--------



E-206

Tumbler Holder

MRP CP	1015/-
--------	--------



E-207

Liquid Soap Dispenser

MRP CP	1255/-
--------	--------



E-208

Napkin Ring

MRP CP	955/-
--------	-------



E-209

Robe Hook

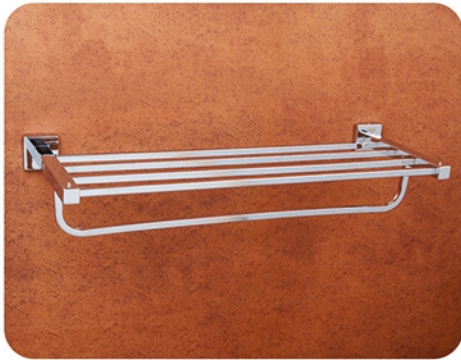
MRP CP	752/-
--------	-------



E-210

Paper Holder

MRP CP	1350/-
--------	--------



»» **A-301**

Tower Rack

SIZE (INCH)	18"	24"
MRP CP	3150/-	3585/-



»» **A-302**

Tower Rod

SIZE (INCH)	18"	24"
MRP CP	1160/-	1260/-



»» **A-303**

Soap Dish

MRP CP	699/-
--------	-------



»» **A-304**

Double Soap Dish

MRP CP	1250/-
--------	--------



»» **A-305**

Soap Dish with Tumbler Holder

MRP CP	1523/-
--------	--------



»» **A-306**

Tumbler Holder

MRP CP	985/-
--------	-------



»» **A-307**

Liquid Soap Dispenser

MRP CP	1220/-
--------	--------



»» **A-308**

Napkin Ring

MRP CP	820/-
--------	-------



»» **A-309**

Robe Hook

MRP CP	635/-
--------	-------



»» **A-310**

Paper Holder

MRP CP	1200/-
--------	--------



C-401

Tower Rack

SIZE (INCH)	18"	24"
MRP CP	3240/-	3685/-



C-402

Tower Rod

SIZE (INCH)	18"	24"
MRP CP	1197/-	1299/-



C-403

Soap Dish

MRP CP	710/-
--------	-------



C-404

Double Soap Dish

MRP CP	1285/-
--------	--------



C-405

Soap Dish with Tumbler Holder

MRP CP	1570/-
--------	--------



C-406

Tumbler Holder

MRP CP	999/-
--------	-------



C-407

Liquid Soap Dispenser

MRP CP	1260/-
--------	--------



C-408

Napkin Ring

MRP CP	850/-
--------	-------



C-409

Robe Hook

MRP CP	650/-
--------	-------



»» **R-501**

Tower Rack

SIZE (INCH)	18"	24"
MRP CP	2715/-	2933/-



»» **R-502**

Tower Rod

SIZE (INCH)	18"	24"
MRP CP	1485/-	1620/-



»» **R-503**

Soap Dish

MRP CP	685/-
--------	-------



»» **R-504**

Double Soap Dish

MRP CP	1217/-
--------	--------



»» **R-505**

Soap Dish with Tumbler Holder

MRP CP	1417/-
--------	--------



»» **R-506**

Tumbler Holder

MRP CP	967/-
--------	-------



»» **R-507**

Liquid Soap Dispenser

MRP CP	1172/-
--------	--------



»» **R-508**

Napkin Ring

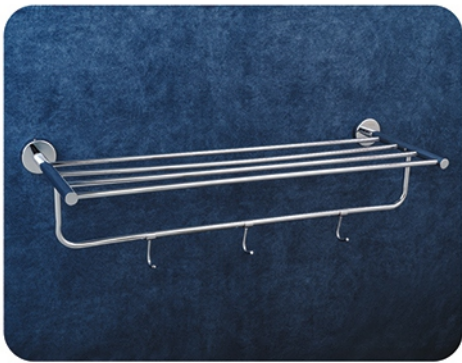
MRP CP	1015/-
--------	--------



»» **R-509**

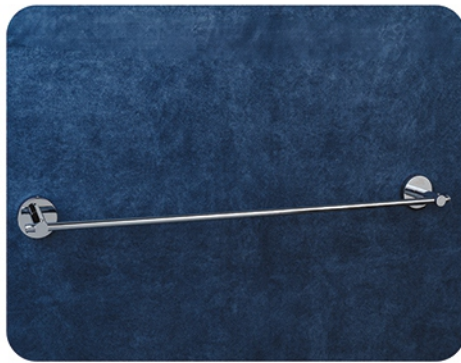
Robe Hook

MRP CP	583/-
--------	-------



L-601
Tower Rack

SIZE (INCH)	18"	24"
MRP CP	1655/-	1855/-



L-602
Tower Rod

SIZE (INCH)	18"	24"
MRP CP	760/-	1045/-



L-603
Soap Dish

MRP CP	460/-
--------	-------



L-604
Double Soap Dish

MRP CP	860/-
--------	-------



L-605
Soap Dish with Tumbler Holder

MRP CP	980/-
--------	-------



L-606
Tumbler Holder

MRP CP	610/-
--------	-------



L-607
Liquid Soap Dispenser

MRP CP	840/-
--------	-------



L-608
Napkin Ring

MRP CP	490/-
--------	-------



L-609
Robe Hook

MRP CP	367/-
--------	-------



L-610
Paper Holder

MRP CP	1350/-
--------	--------

SQUARE



»» S-701

Tower Rack

SIZE (INCH)	18"	24"
MRP CP	1799/-	2070/-



»» S-702

Tower Rod

SIZE (INCH)	18"	24"
MRP CP	817/-	865/-



»» S-703

Soap Dish

MRP CP	500/-
--------	-------



»» S-704

Double Soap Dish

MRP CP	810/-
--------	-------



»» S-705

Soap Dish with Tumbler Holder

MRP CP	1060/-
--------	--------



»» S-706

Tumbler Holder

MRP CP	760/-
--------	-------



»» S-707

Liquid Soap Dispenser

MRP CP	930/-
--------	-------



»» S-708

Napkin Ring

MRP CP	580/-
--------	-------



»» S-709

Robe Hook

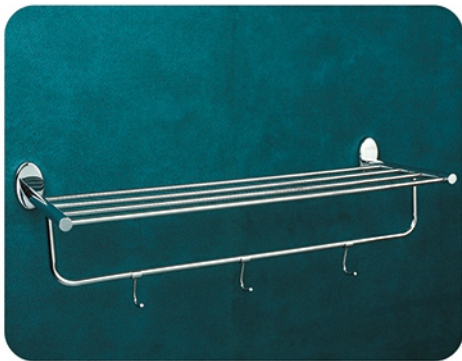
MRP CP	410/-
--------	-------



»» S-710

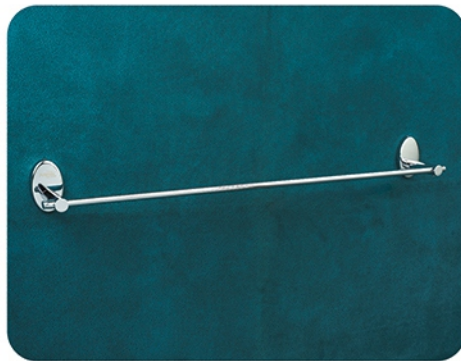
Paper Holder

MRP CP	1200/-
--------	--------



R-801
Tower Rack

SIZE (INCH)	18"	24"
MRP CP	1540/-	1635/-



R-802
Tower Rod

SIZE (INCH)	18"	24"
MRP CP	699/-	710/-



R-803
Soap Dish

MRP CP	485/-
--------	-------



R-804
Double Soap Dish

MRP CP	840/-
--------	-------



R-805
Soap Dish with Tumbler Holder

MRP CP	1010/-
--------	--------



R-806
Tumbler Holder

MRP CP	660/-
--------	-------



R-807
Liquid Soap Dispenser

MRP CP	860/-
--------	-------



R-808
Napkin Ring

MRP CP	490/-
--------	-------



R-809
Robe Hook

MRP CP	370/-
--------	-------



R-810
Paper Holder

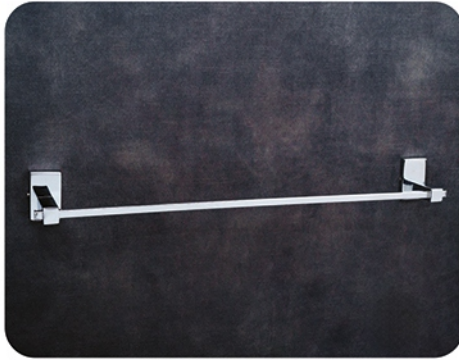
MRP CP	1350/-
--------	--------



S-901

Tower Rack

SIZE (INCH)	18"	24"
MRP CP	1730/-	1820/-



S-902

Tower Rod

SIZE (INCH)	18"	24"
MRP CP	840/-	860/-



S-903

Soap Dish

MRP CP	520/-
--------	-------



S-904

Double Soap Dish

MRP CP	830/-
--------	-------



S-905

Soap Dish with Tumbler Holder

MRP CP	1090/-
--------	--------



S-906

Tumbler Holder

MRP CP	750/-
--------	-------



S-907

Liquid Soap Dispenser

MRP CP	955/-
--------	-------



S-908

Napkin Ring

MRP CP	580/-
--------	-------



S-909

Robe Hook

MRP CP	417/-
--------	-------



S-910

Paper Holder

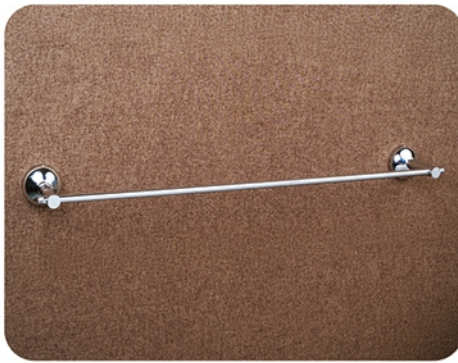
MRP CP	1200/-
--------	--------



»» M-1001

Tower Rack

SIZE (INCH)	18"	24"
MRP CP	1865/-	1970/-



»» M-1002

Tower Rod

SIZE (INCH)	18"	24"
MRP CP	870/-	890/-



»» M-1003

Soap Dish

MRP CP	533/-
--------	-------



»» M-1004

Double Soap Dish

MRP CP	853/-
--------	-------



»» M-1005

Soap Dish with Tumbler Holder

MRP CP	1010/-
--------	--------



»» M-1006

Tumbler Holder

MRP CP	740/-
--------	-------



»» M-1007

Liquid Soap Dispenser

MRP CP	890/-
--------	-------



»» M-1008

Napkin Ring

MRP CP	545/-
--------	-------



»» M-1009

Robe Hook

MRP CP	445/-
--------	-------



»» M-1010

Paper Holder

MRP CP	1350/-
--------	--------



»» **A-1101**

Tower Rack

SIZE (INCH)	18"	24"
MRP CP	2030/-	2060/-



»» **A-1102**

Tower Rod

SIZE (INCH)	18"	24"
MRP CP	767/-	790/-



»» **A-1103**

Soap Dish

MRP CP	535/-
--------	-------



»» **A-1104**

Double Soap Dish

MRP CP	790/-
--------	-------



»» **A-1105**

Soap Dish with Tumbler Holder

MRP CP	960/-
--------	-------



»» **A-1106**

Tumbler Holder

MRP CP	655/-
--------	-------



»» **A-1107**

Liquid Soap Dispenser

MRP CP	790/-
--------	-------



»» **A-1108**

Napkin Ring

MRP CP	515/-
--------	-------



»» **A-1109**

Robe Hook

MRP CP	347/-
--------	-------



PRIDEL INDUSTRIES

📍 | Shapar (Veraval) 360024, Rajkot (Gujarat) BHARAT.

✉ | pridelindustries1@gmail.com

🌐 | www.pridelgroup.com